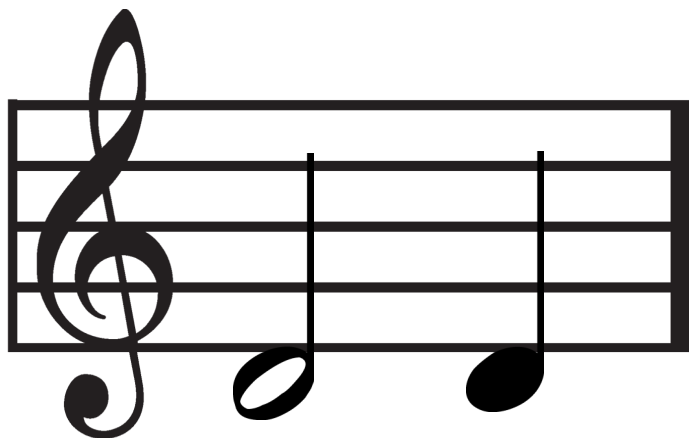


# First Notes Worksheets

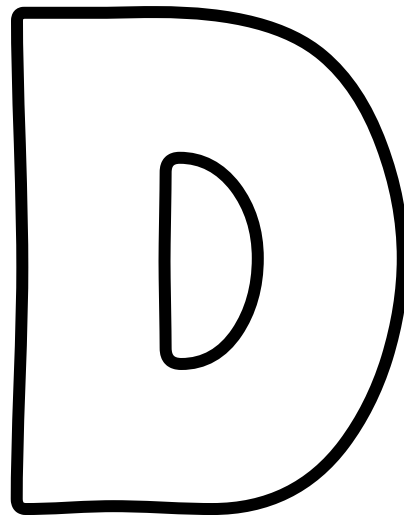


# First Notes

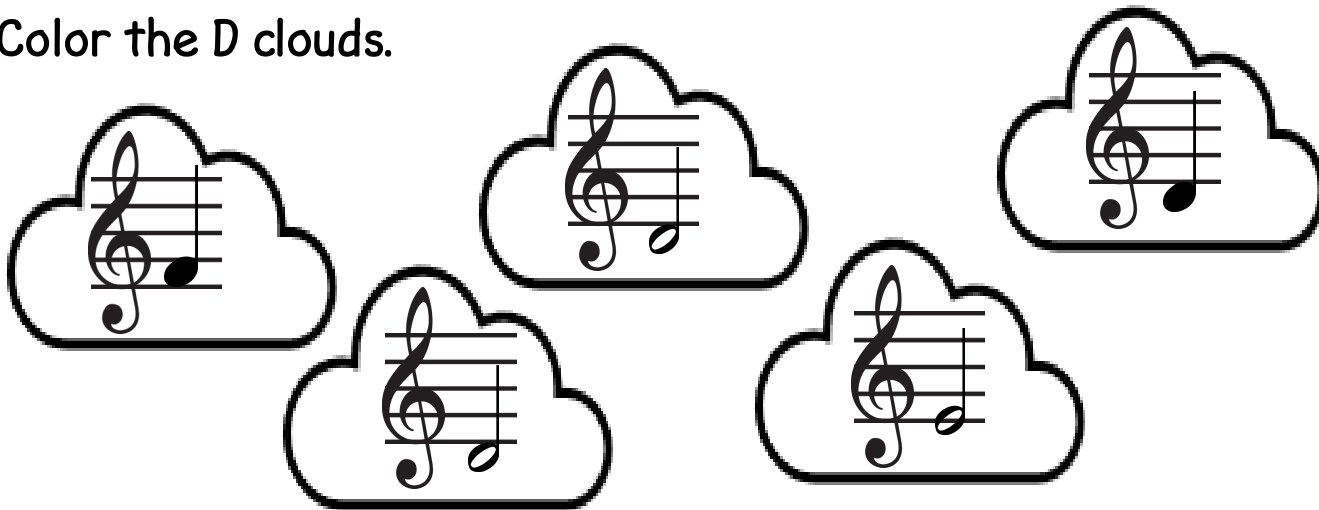


Half Note D

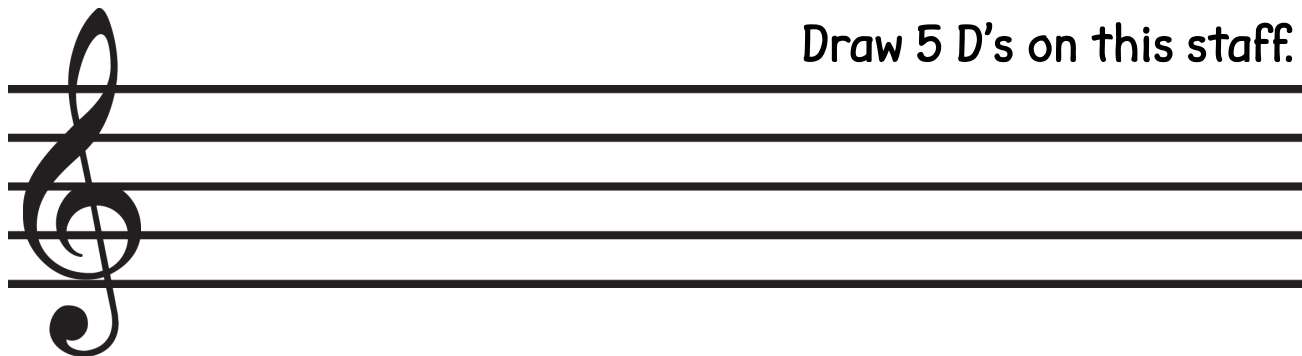
Quarter Note D



Color the D clouds.

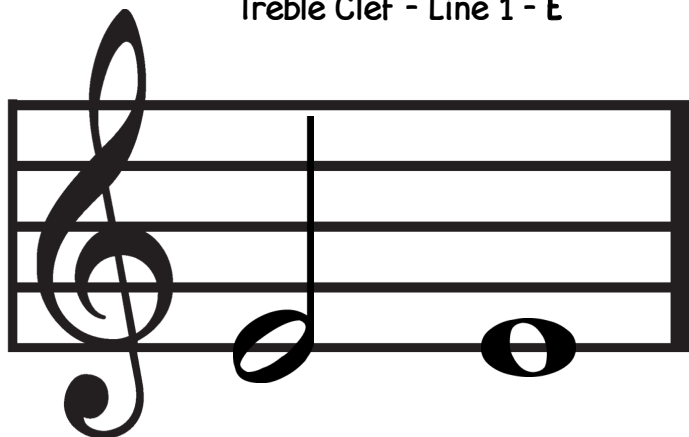


Draw 5 D's on this staff.



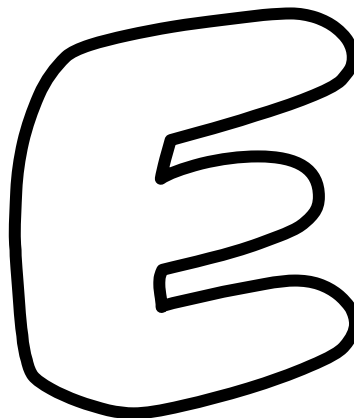
# First Notes

Treble Clef - Line 1 - E

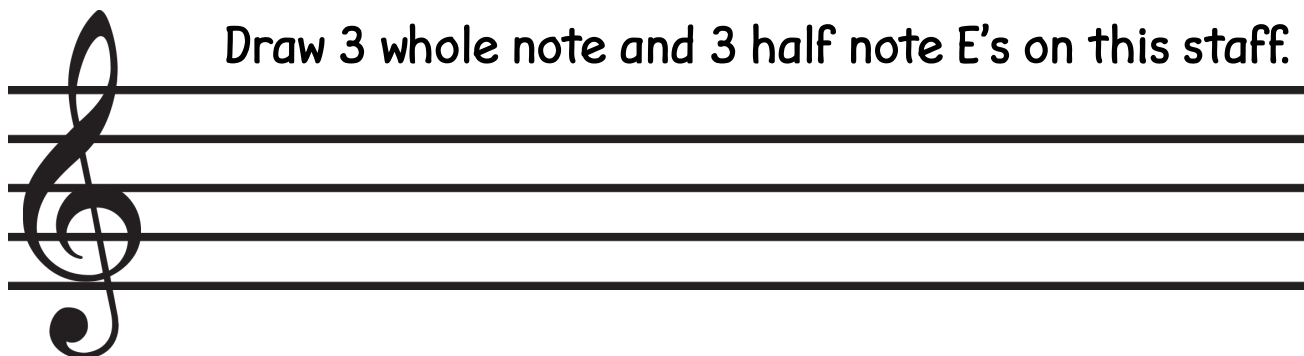


Half Note E

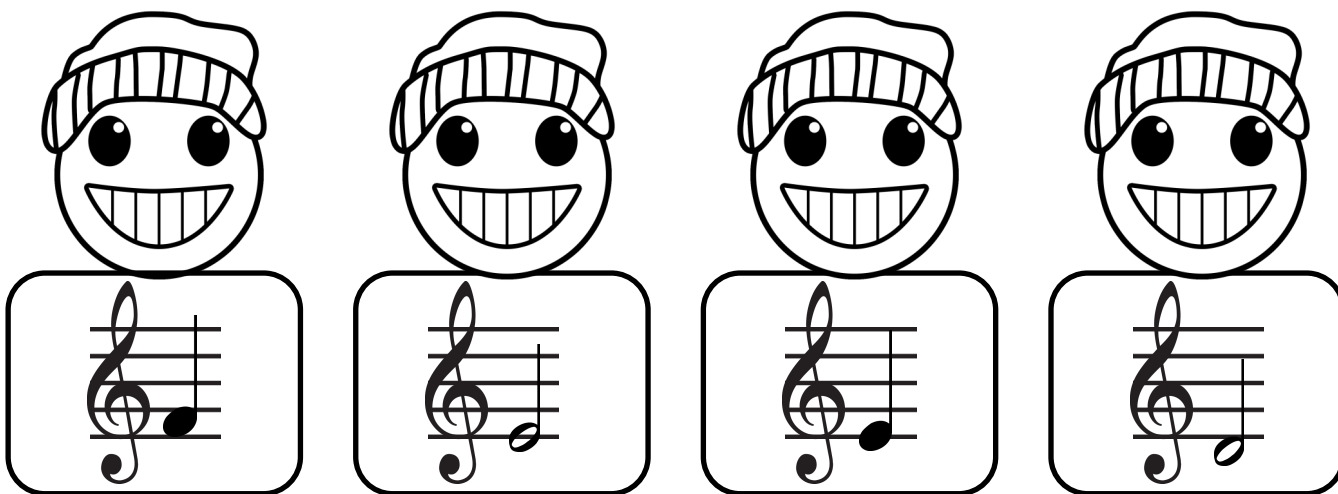
Whole Note E



Draw 3 whole note and 3 half note E's on this staff.

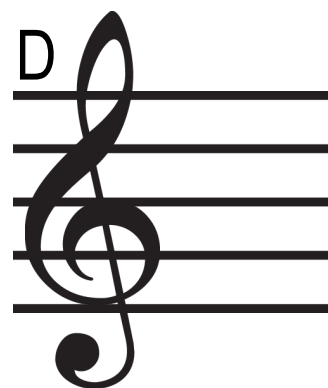
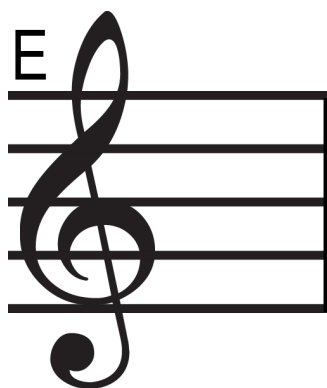
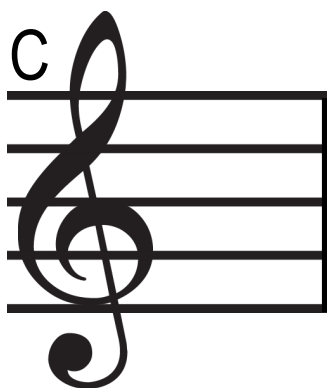
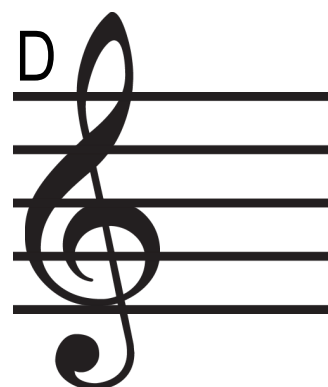
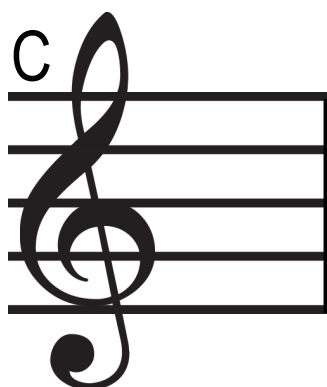
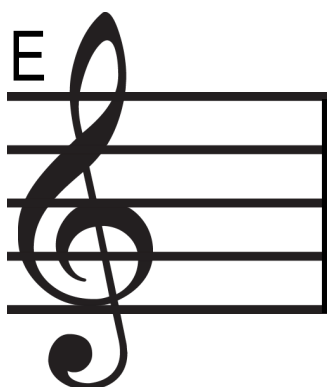
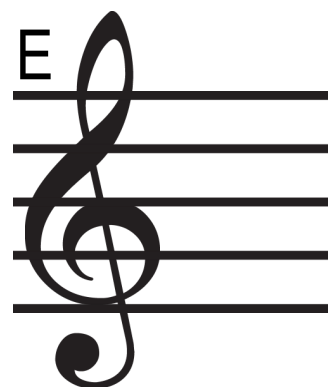
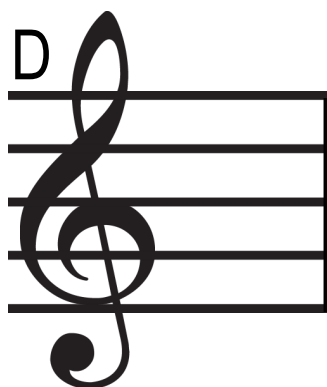
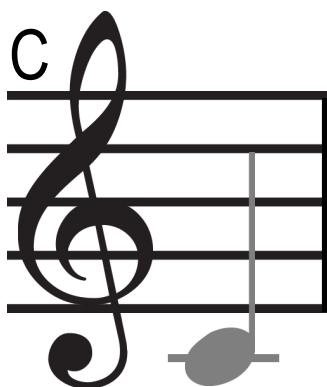


Color the faces above the Es

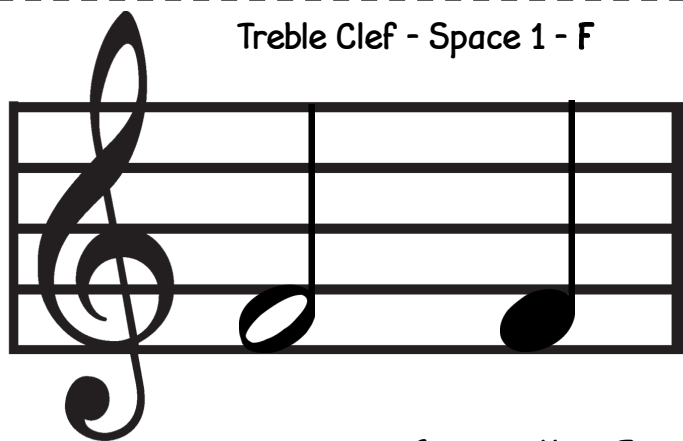
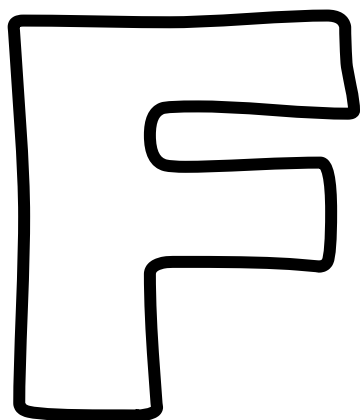


# First Notes

Draw the notes on the staves below



# First Notes

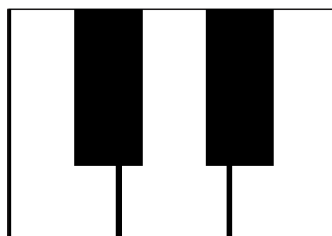
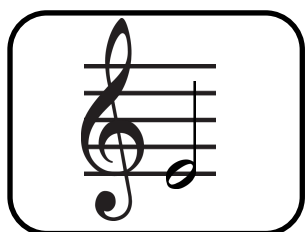
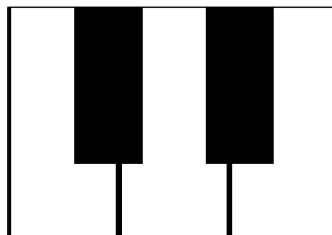
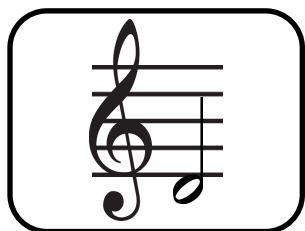
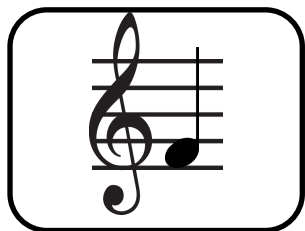


Treble Clef - Space 1 - F

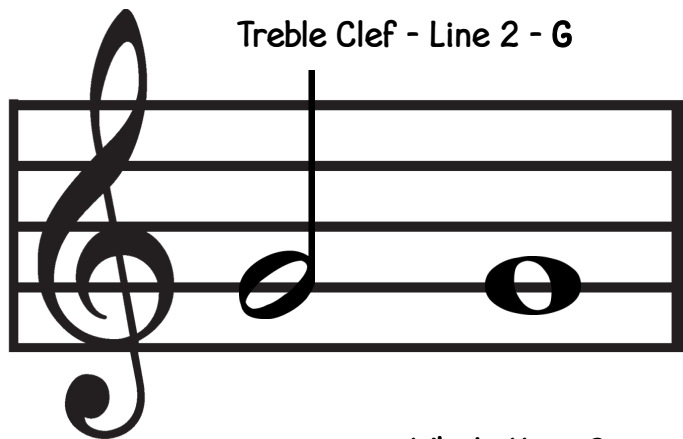
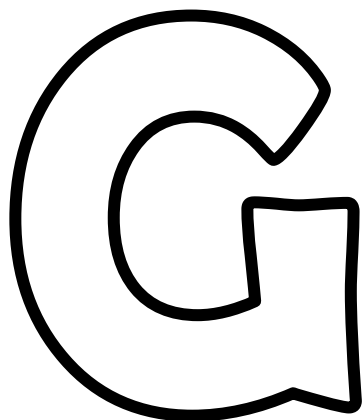
Half Note F

Quarter Note F

Color the piano key that matches the note.



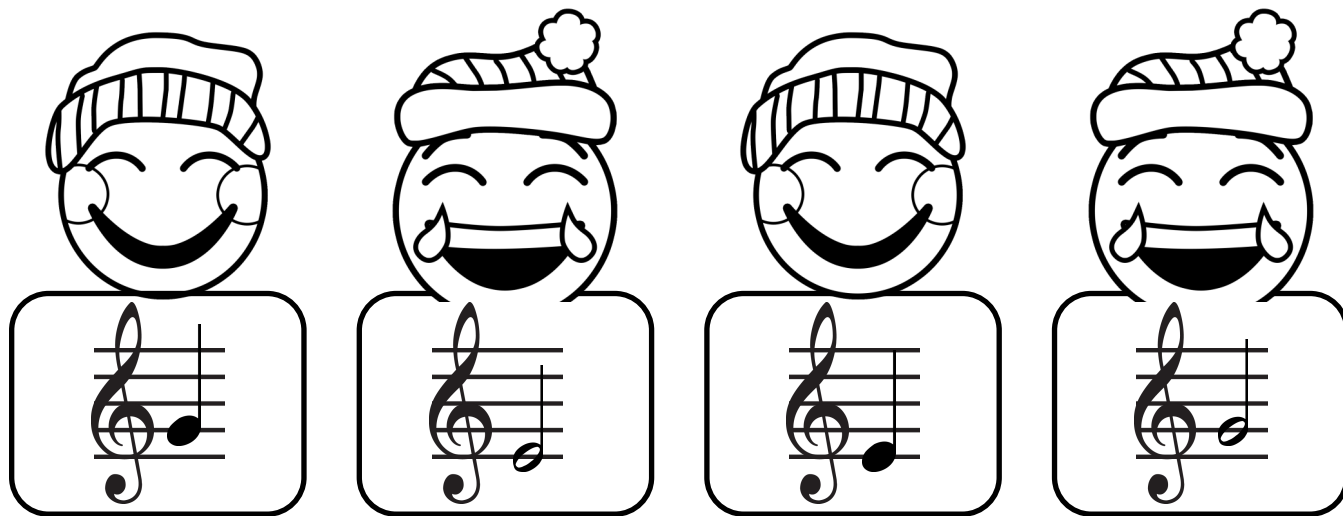
# First Notes



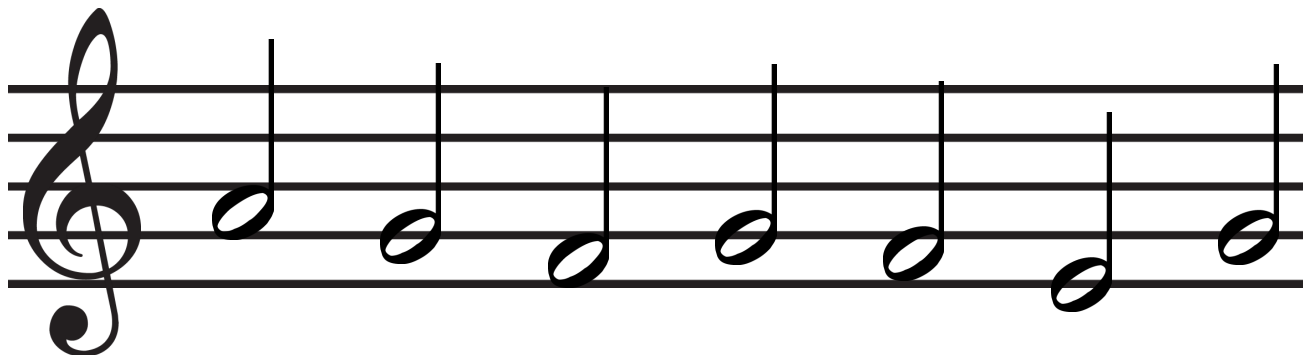
Half Note G

Whole Note G

Color the faces above the Gs

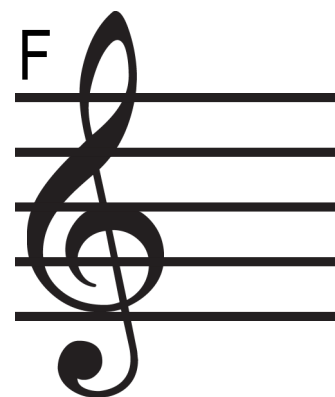
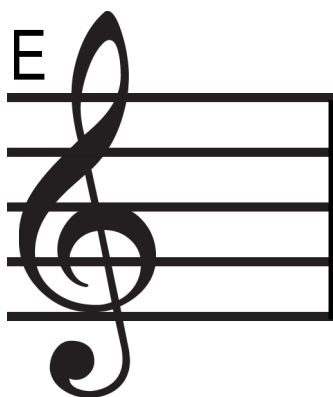
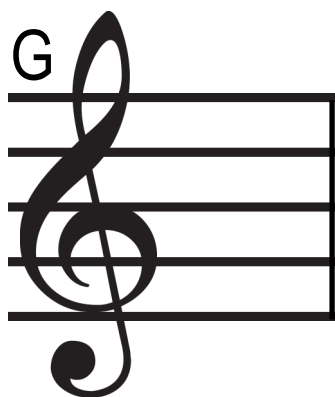
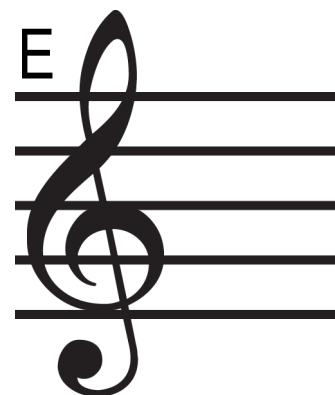
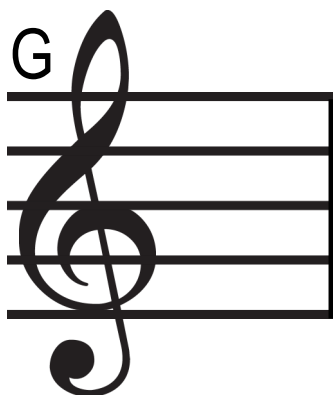
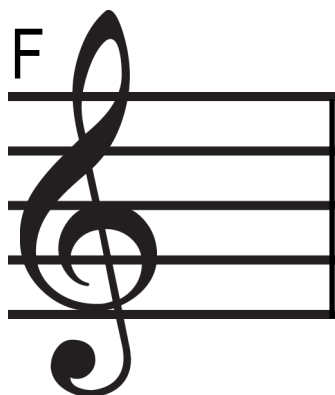
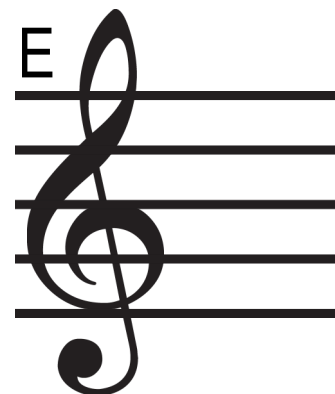
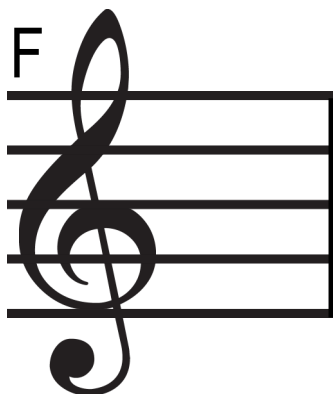
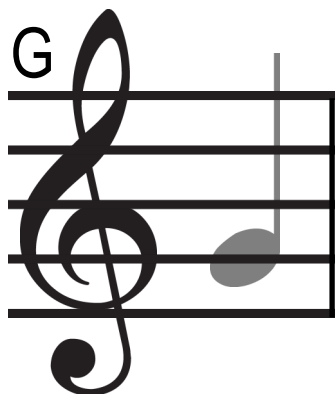


Circle all the G's

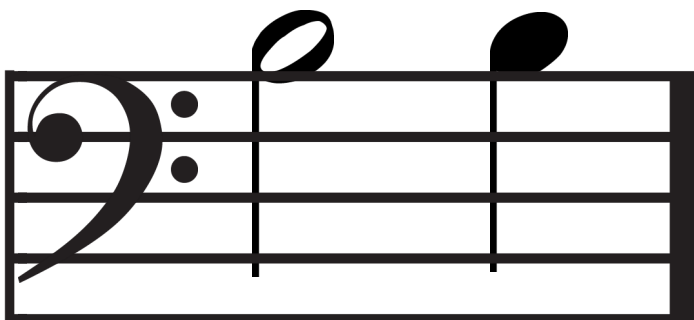


# First Notes

Draw the notes on the staves below

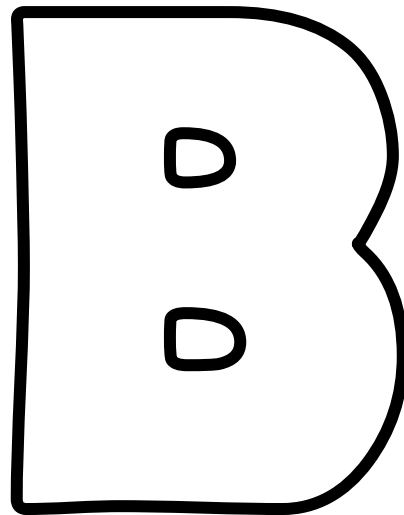


# First Notes



Half Note B

Quarter Note B



Color the B clouds.

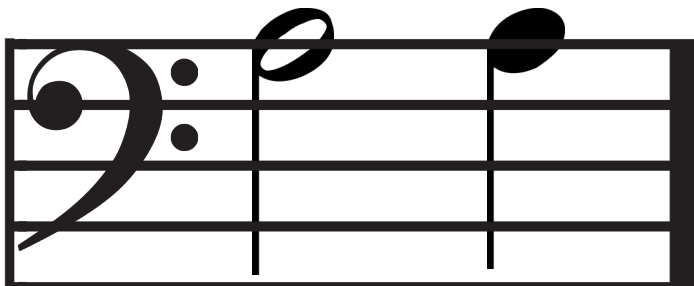


Draw 4 B's on this staff.



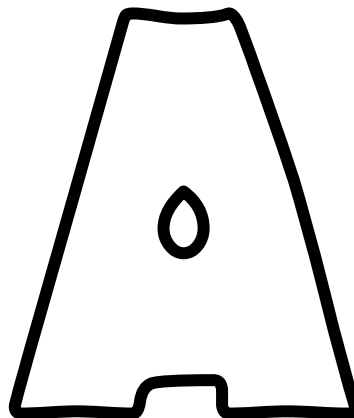
# First Notes

Bass Clef - Line 5 - A

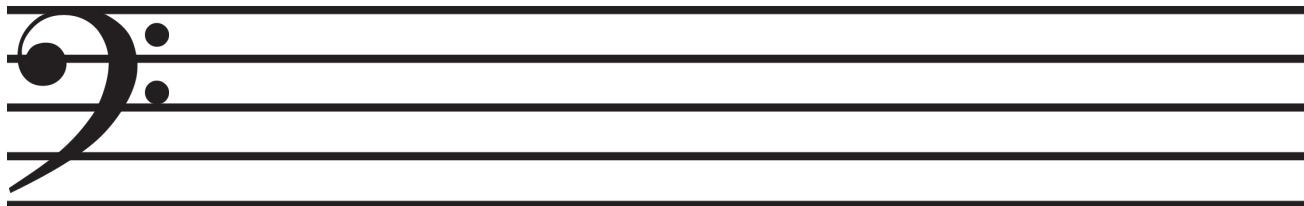


Half Note A

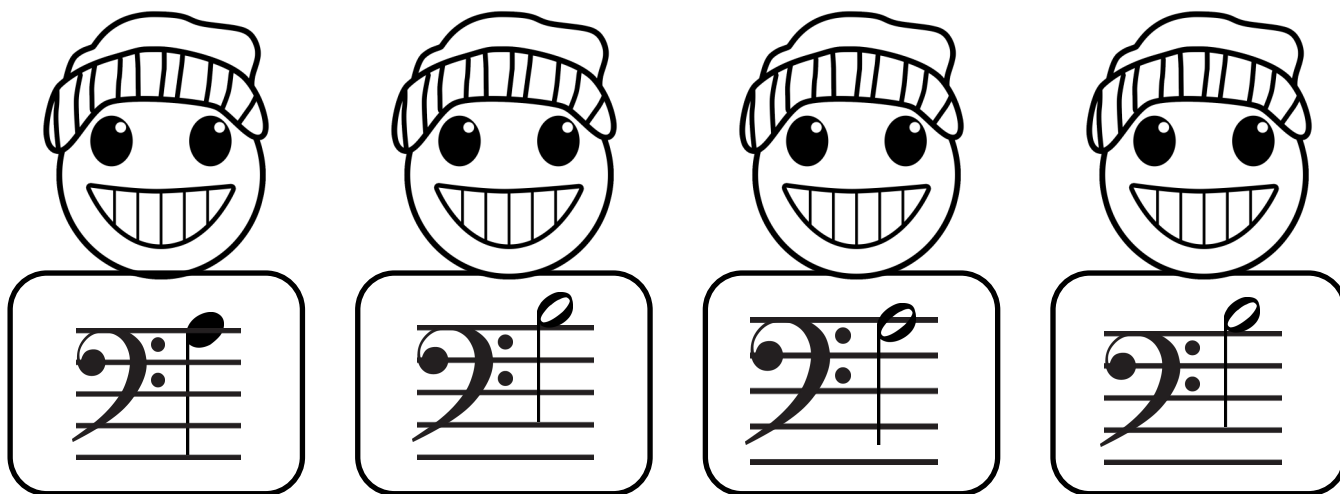
Quarter Note A



Draw 3 whole note A's and 3 half note A's on this staff.

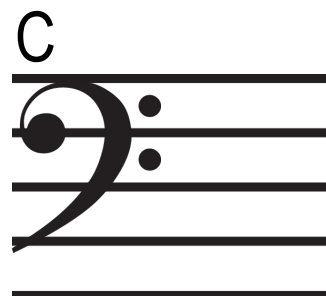
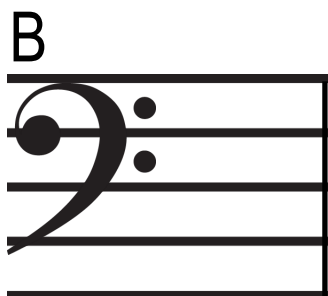
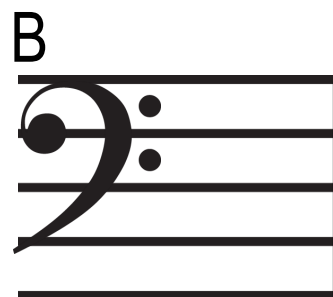
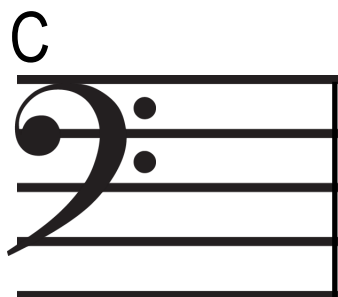
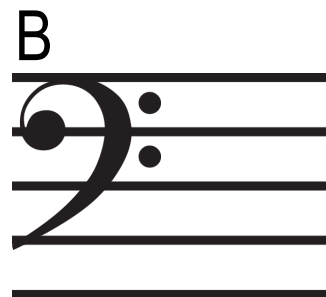
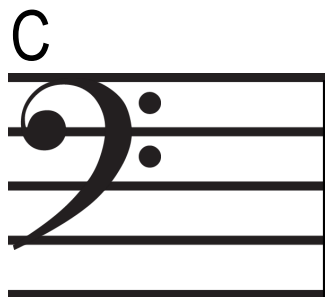


Color the faces above the As

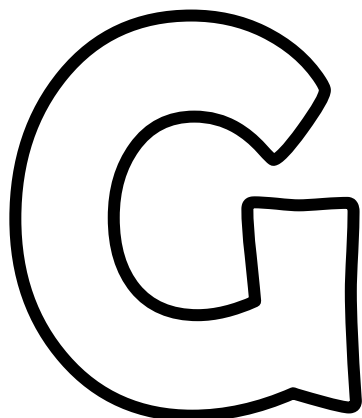


# First Notes

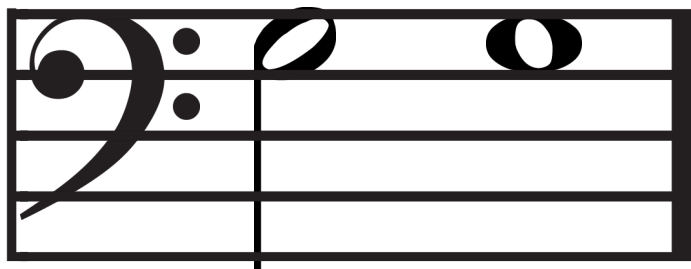
Draw the notes on the staves below



# First Notes



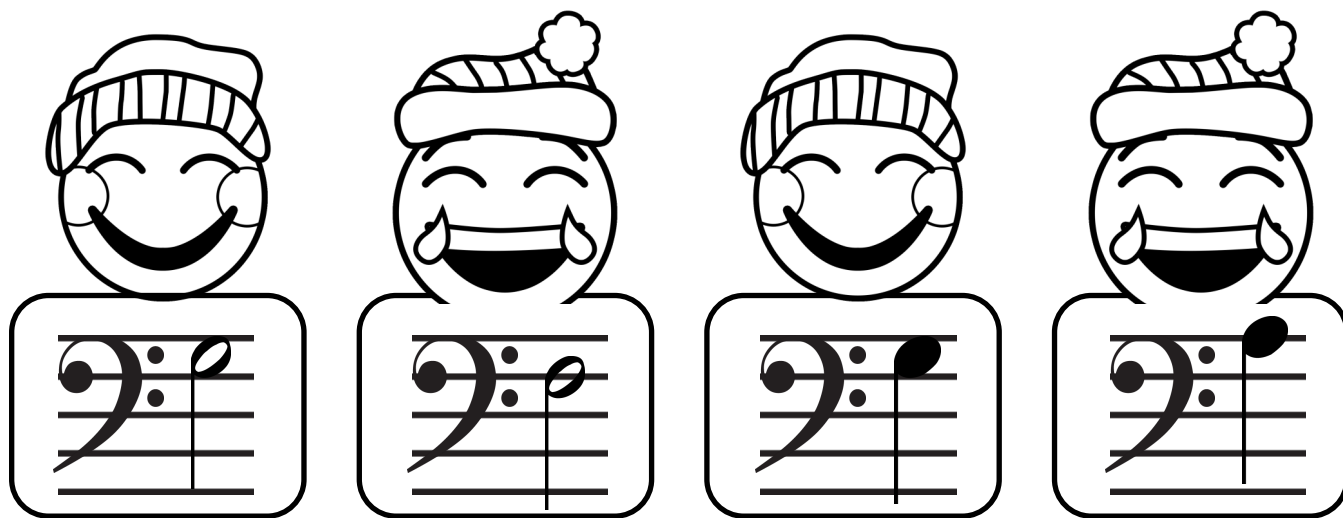
Bass Clef - Space 4 - G



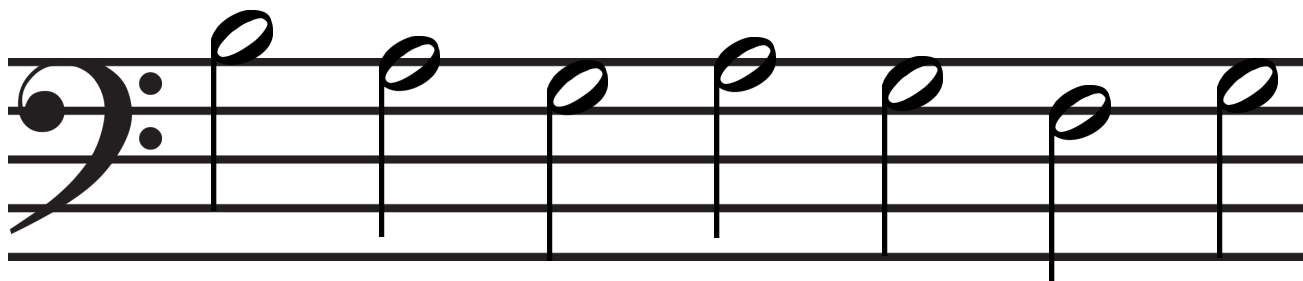
Half Note G

Whole Note G

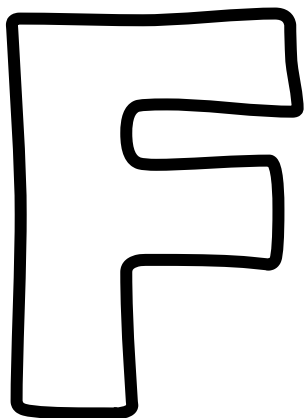
Color the faces above the Gs



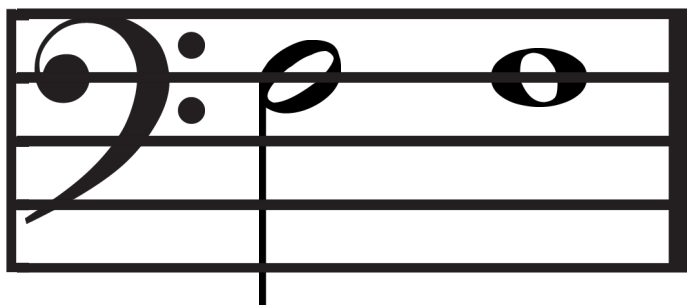
Circle all the G's



# First Notes



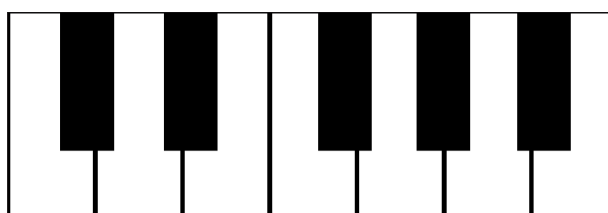
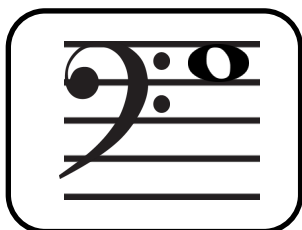
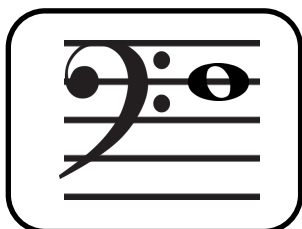
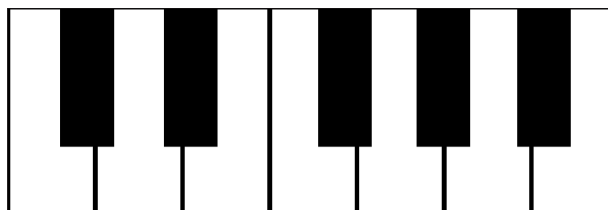
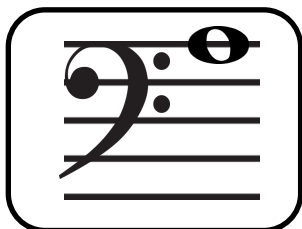
Bass Clef - Line 4 - F



Half Note F

Whole Note F

Color the piano key that matches the note.



# First Notes

Draw the notes on the staves below

