



[www.Piano-Together.com](http://www.Piano-Together.com)

---

**1**

3



A musical exercise on a grand staff. The treble clef staff contains a sequence of notes: four quarter notes (C4, D4, E4, F4) followed by two half notes (G4, A4). A finger number '3' is placed above the first note. The bass clef staff is empty.

[www.Piano-Together.com](http://www.Piano-Together.com)

Mini Sight Reader : Steps

**2**

1



A musical exercise on a grand staff. The treble clef staff contains a sequence of notes: four quarter notes (C4, D4, E4, F4) followed by two half notes (G4, A4). A finger number '1' is placed above the first note. The bass clef staff is empty.

[www.Piano-Together.com](http://www.Piano-Together.com)

Mini Sight Reader : Steps

**3**

1

Musical notation for exercise 3, showing a treble clef staff with a sequence of notes: G4, A4, B4, C5, D5, E5, F5, G5. The first four notes are quarter notes, and the last four are half notes. The bass clef staff is empty.

[www.Piano-Together.com](http://www.Piano-Together.com)

**Mini Sight Reader : Steps**

**4**

2

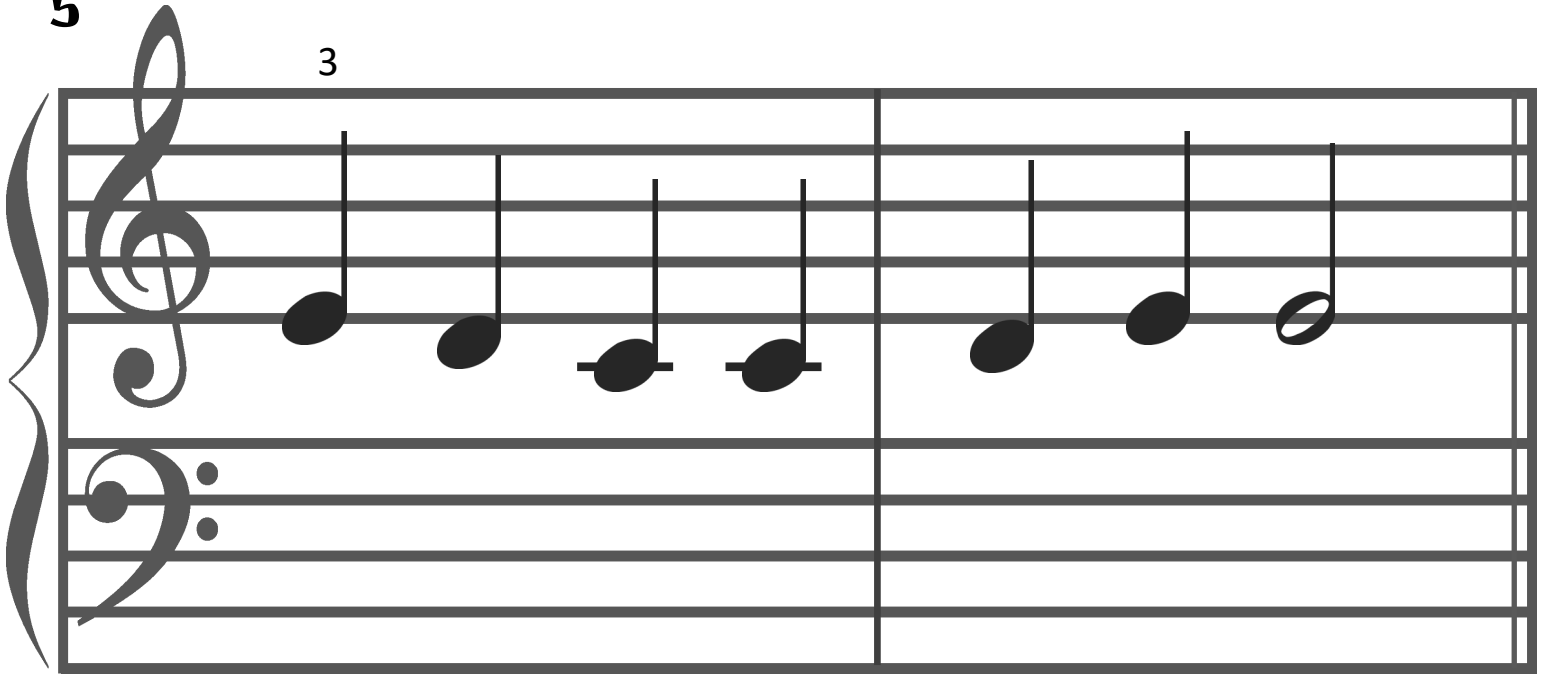
Musical notation for exercise 4, showing a treble clef staff with a sequence of notes: G4, A4, B4, C5, D5, E5, F5, G5. The first four notes are quarter notes, and the last four are half notes. The bass clef staff is empty.

[www.Piano-Together.com](http://www.Piano-Together.com)

**Mini Sight Reader : Steps**

5

3



[www.Piano-Together.com](http://www.Piano-Together.com)

Mini Sight Reader : Steps

6

1

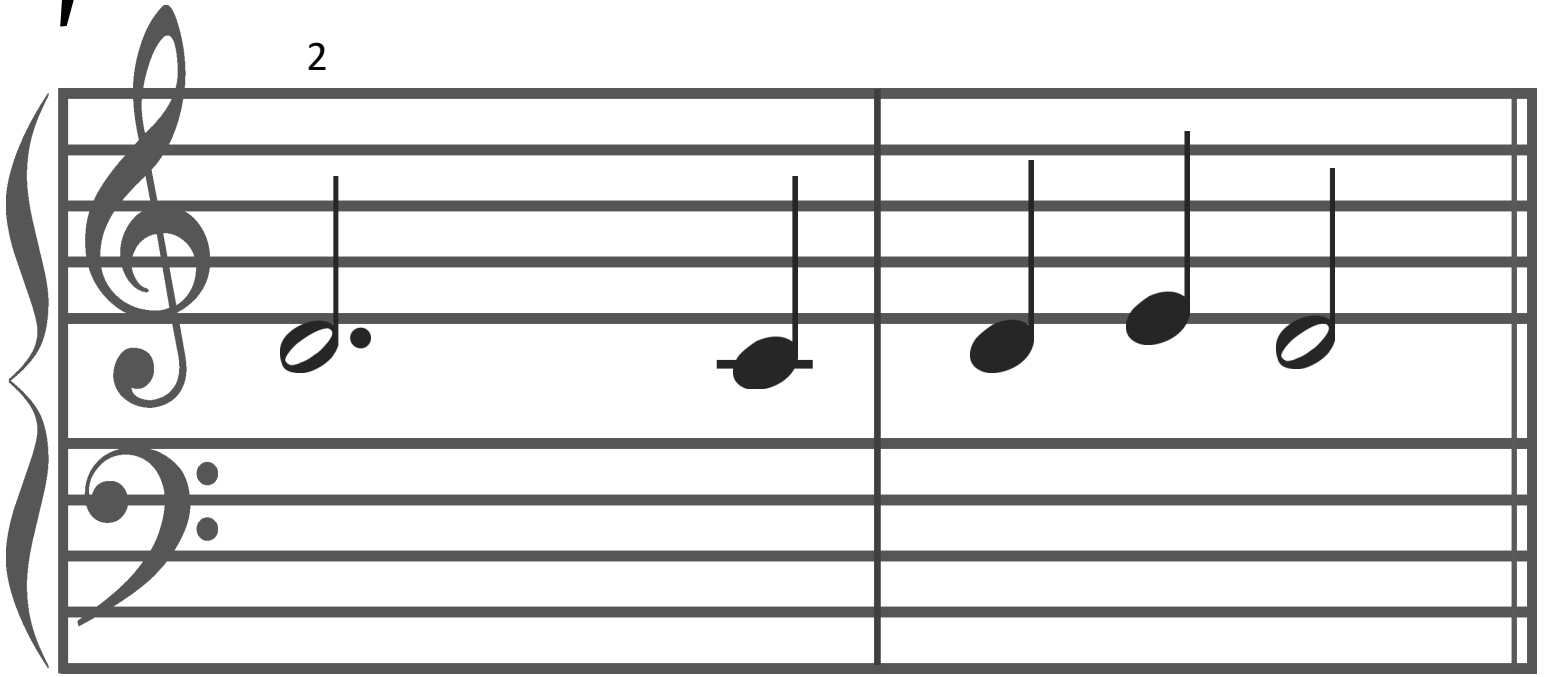


[www.Piano-Together.com](http://www.Piano-Together.com)

Mini Sight Reader : Steps

**7**

2



[www.Piano-Together.com](http://www.Piano-Together.com)

**Mini Sight Reader : Steps**

**8**

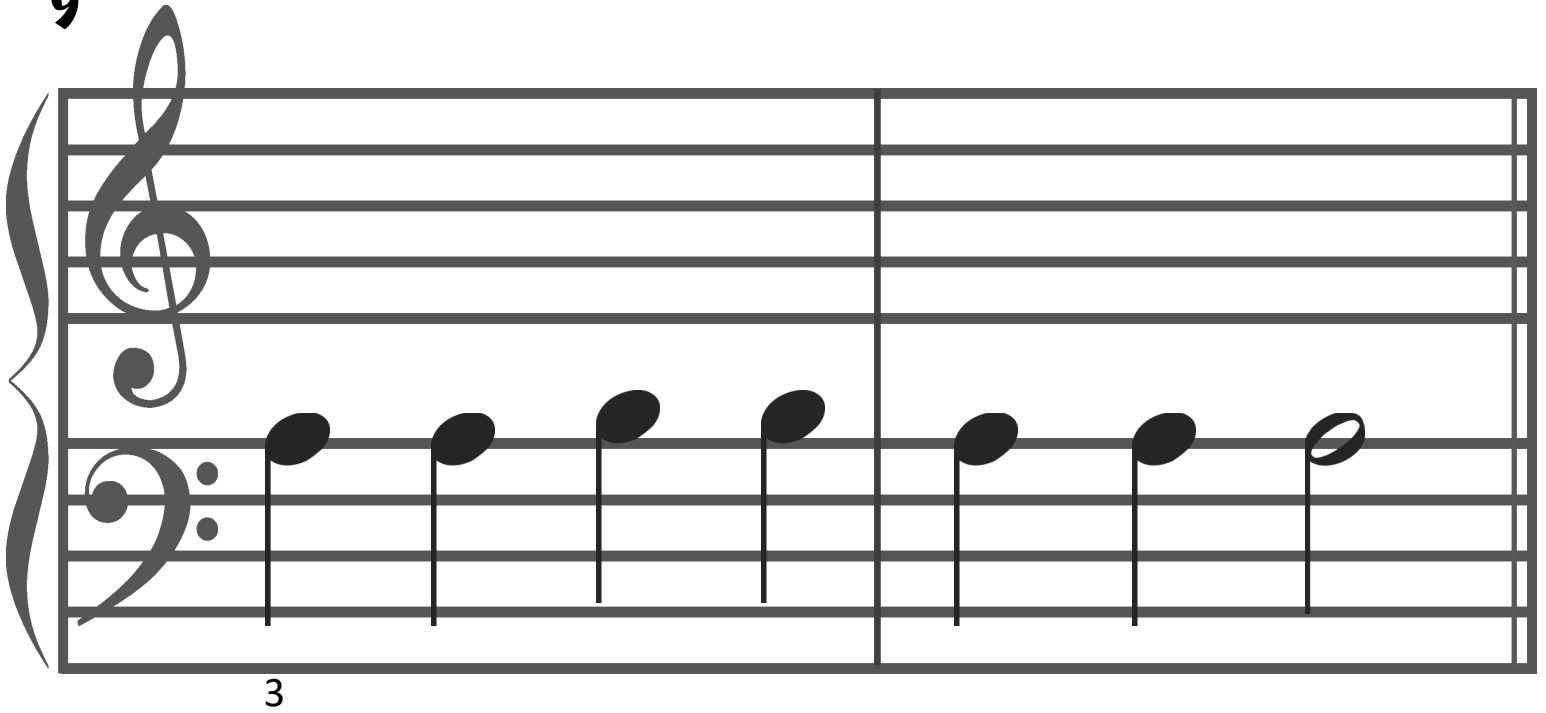
1



[www.Piano-Together.com](http://www.Piano-Together.com)

**Mini Sight Reader : Steps**

9

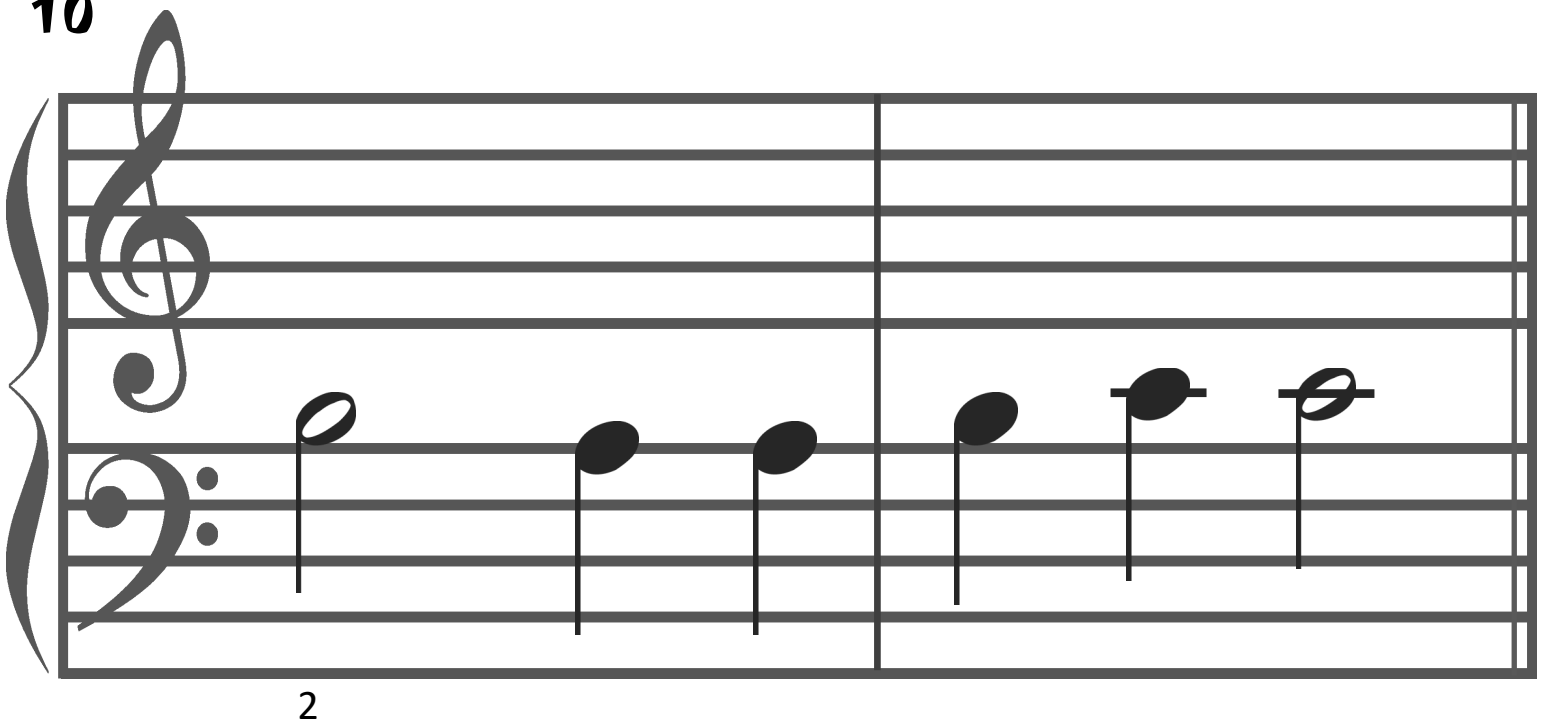


Musical notation for exercise 9, featuring a grand staff with treble and bass clefs. The exercise consists of two measures. The first measure contains four quarter notes: G3, A3, B3, and C4. The second measure contains three quarter notes: D4, E4, and F4. A finger number '3' is written below the first note of the first measure.

[www.Piano-Together.com](http://www.Piano-Together.com)

Mini Sight Reader : Steps

10



Musical notation for exercise 10, featuring a grand staff with treble and bass clefs. The exercise consists of two measures. The first measure contains two quarter notes: G3 and A3. The second measure contains three quarter notes: B3, C4, and D4. A finger number '2' is written below the first note of the first measure.

[www.Piano-Together.com](http://www.Piano-Together.com)

Mini Sight Reader : Steps

11

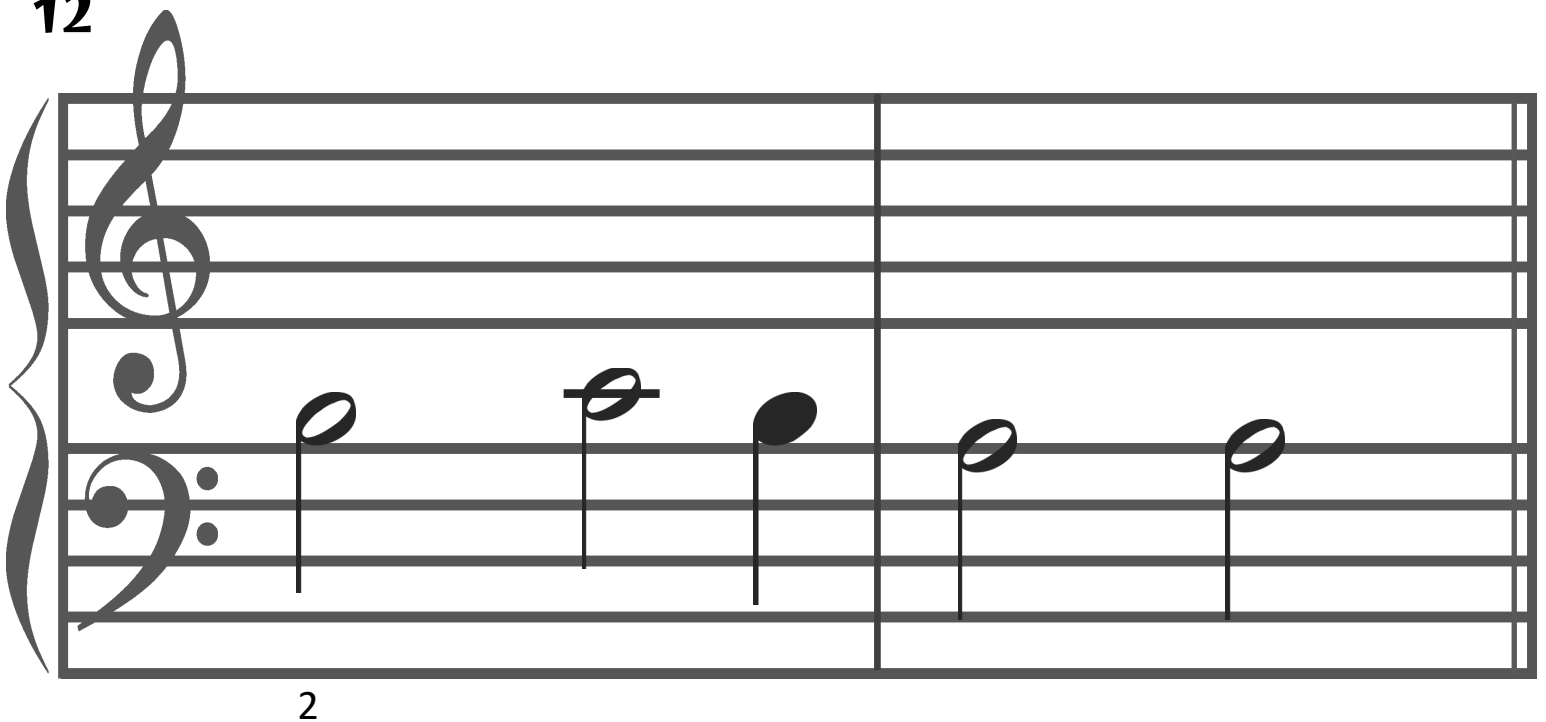


Musical notation for exercise 11, featuring a grand staff with treble and bass clefs. The bass clef contains a sequence of six quarter notes: G2, A2, B2, C3, D3, and E3. A bracket below the first three notes is labeled with the number 3. The treble clef is empty. The exercise is divided into two measures by a vertical bar line.

[www.Piano-Together.com](http://www.Piano-Together.com)

Mini Sight Reader : Steps

12

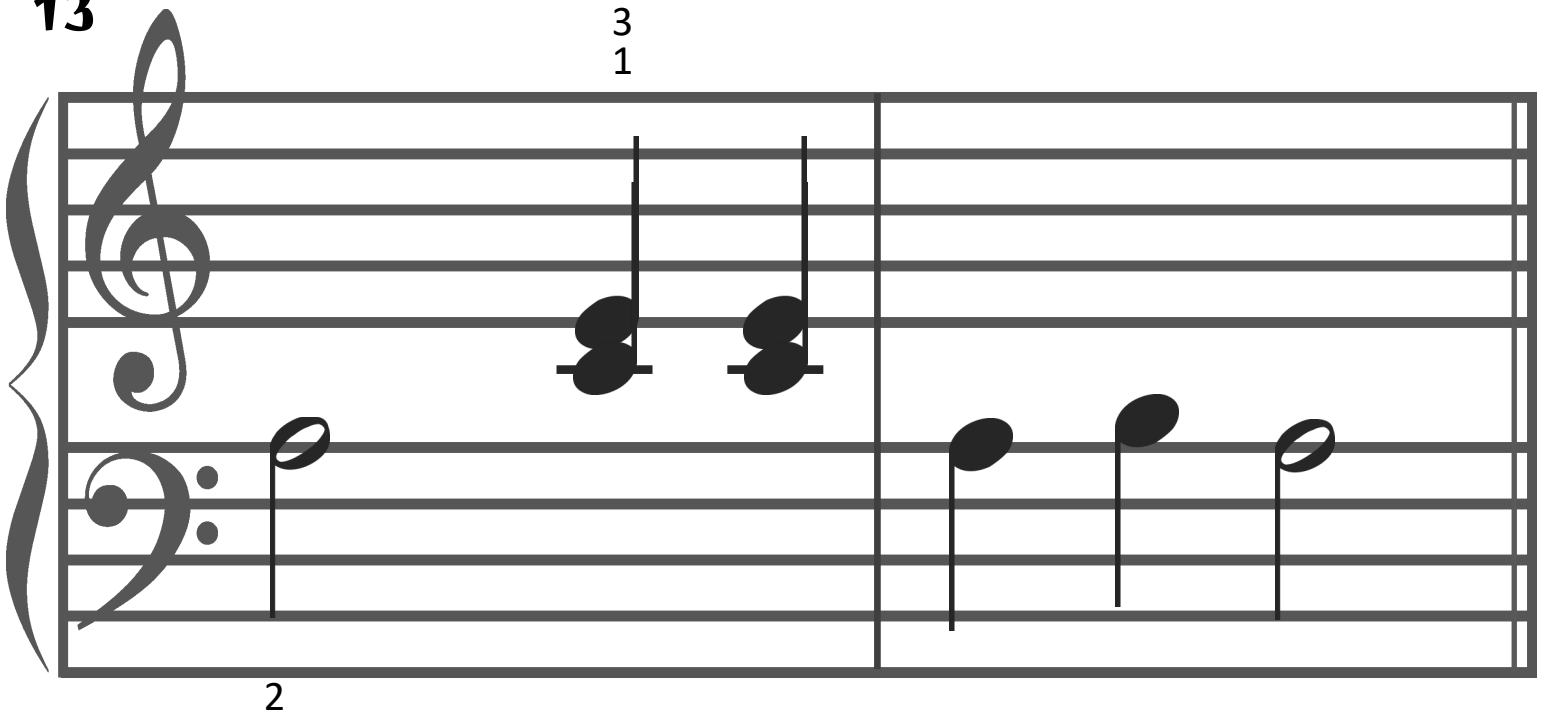


Musical notation for exercise 12, featuring a grand staff with treble and bass clefs. The bass clef contains a sequence of six quarter notes: G2, A2, B2, C3, D3, and E3. A bracket below the first two notes is labeled with the number 2. The treble clef is empty. The exercise is divided into two measures by a vertical bar line.

[www.Piano-Together.com](http://www.Piano-Together.com)

Mini Sight Reader : Steps

13

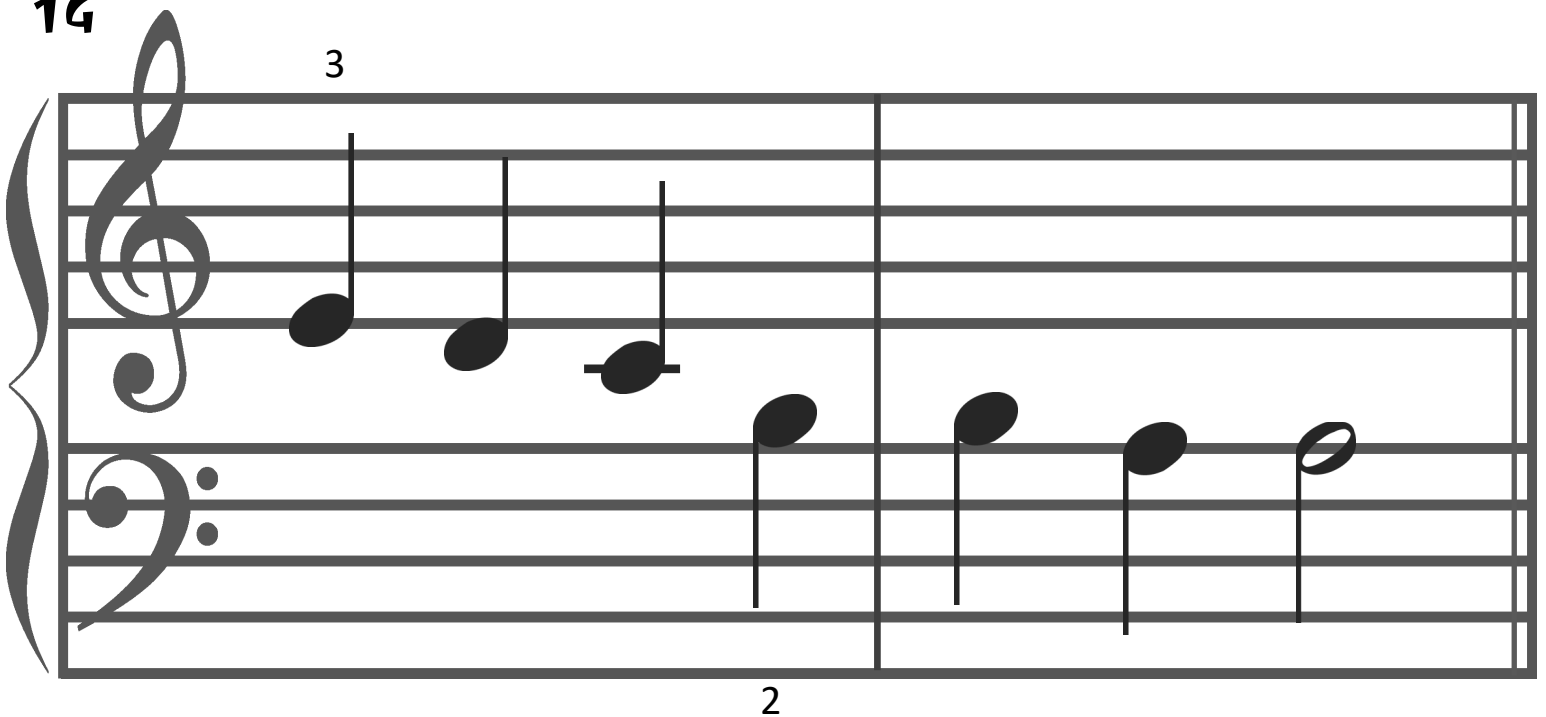


Musical notation for exercise 13, consisting of two staves (treble and bass clef). The first measure contains a bass clef note on the second line (F2) with a finger number '2' below it. The second measure contains two chords: a triad on the first line (C4) with finger numbers '3' and '1' above it, and a dyad on the second line (F4) with finger numbers '3' and '1' above it. The third measure contains a bass clef note on the second line (F2) with a finger number '2' below it. The fourth measure contains a bass clef note on the second line (F2) with a finger number '2' below it. The fifth measure contains a bass clef note on the second line (F2) with a finger number '2' below it. The sixth measure contains a bass clef note on the second line (F2) with a finger number '2' below it.

[www.Piano-Together.com](http://www.Piano-Together.com)

Mini Sight Reader : Steps

14



Musical notation for exercise 14, consisting of two staves (treble and bass clef). The first measure contains a treble clef note on the second line (D4) with a finger number '3' above it. The second measure contains a treble clef note on the second line (D4) with a finger number '3' above it. The third measure contains a treble clef note on the second line (D4) with a finger number '3' above it. The fourth measure contains a treble clef note on the second line (D4) with a finger number '3' above it. The fifth measure contains a bass clef note on the second line (F2) with a finger number '2' below it. The sixth measure contains a bass clef note on the second line (F2) with a finger number '2' below it. The seventh measure contains a bass clef note on the second line (F2) with a finger number '2' below it. The eighth measure contains a bass clef note on the second line (F2) with a finger number '2' below it.

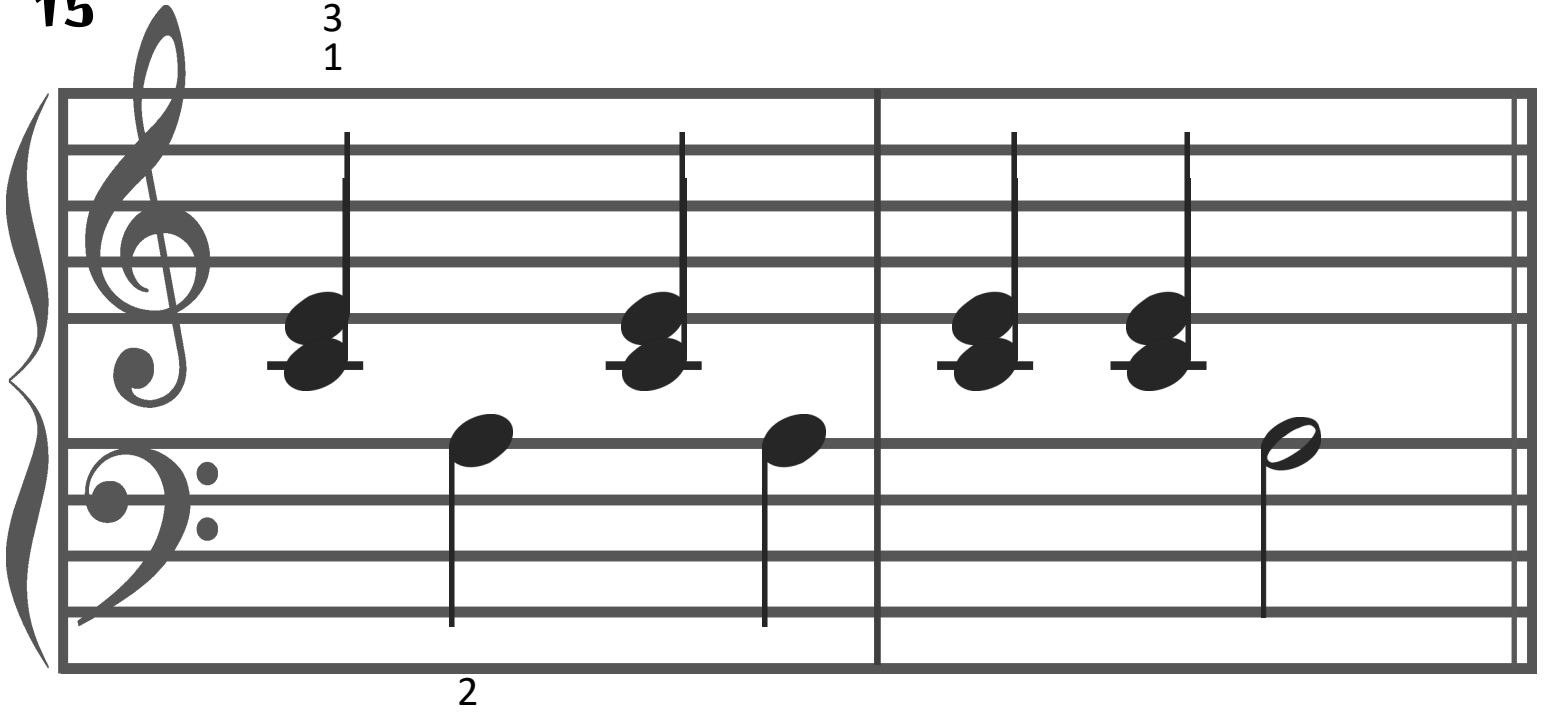
[www.Piano-Together.com](http://www.Piano-Together.com)

Mini Sight Reader : Steps



15

3  
1



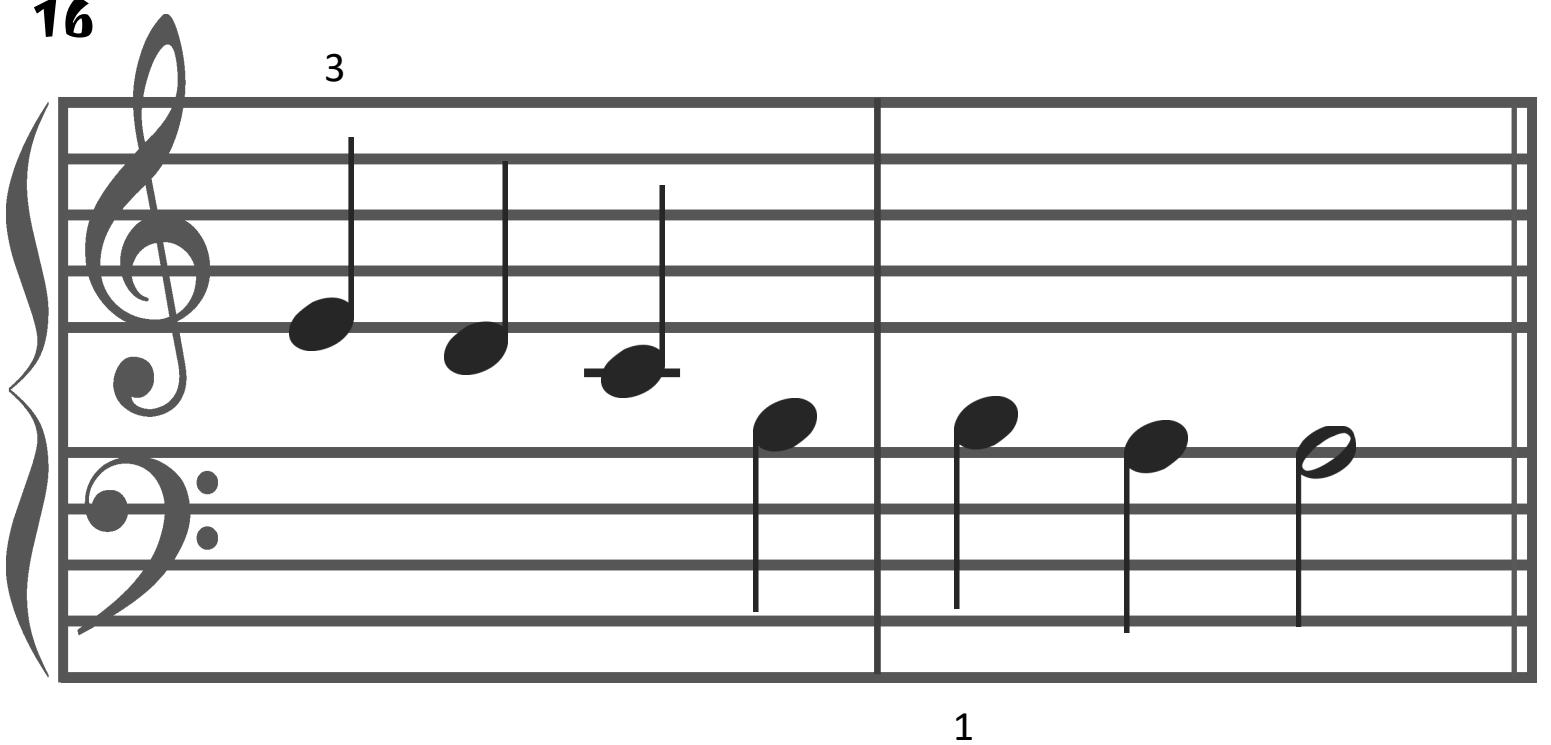
Musical notation for exercise 15, consisting of two staves (treble and bass clef). The exercise is divided into two measures. In the first measure, the treble clef has a triad of notes (F4, A4, C5) with a '3' above and a '1' below. The bass clef has a single note (F3) with a '2' below. In the second measure, the treble clef has a triad of notes (G4, B4, D5) with a '3' above and a '1' below. The bass clef has a single note (G3) with a '2' below. The notes are quarter notes.

[www.Piano-Together.com](http://www.Piano-Together.com)

Mini Sight Reader : Steps

16

3

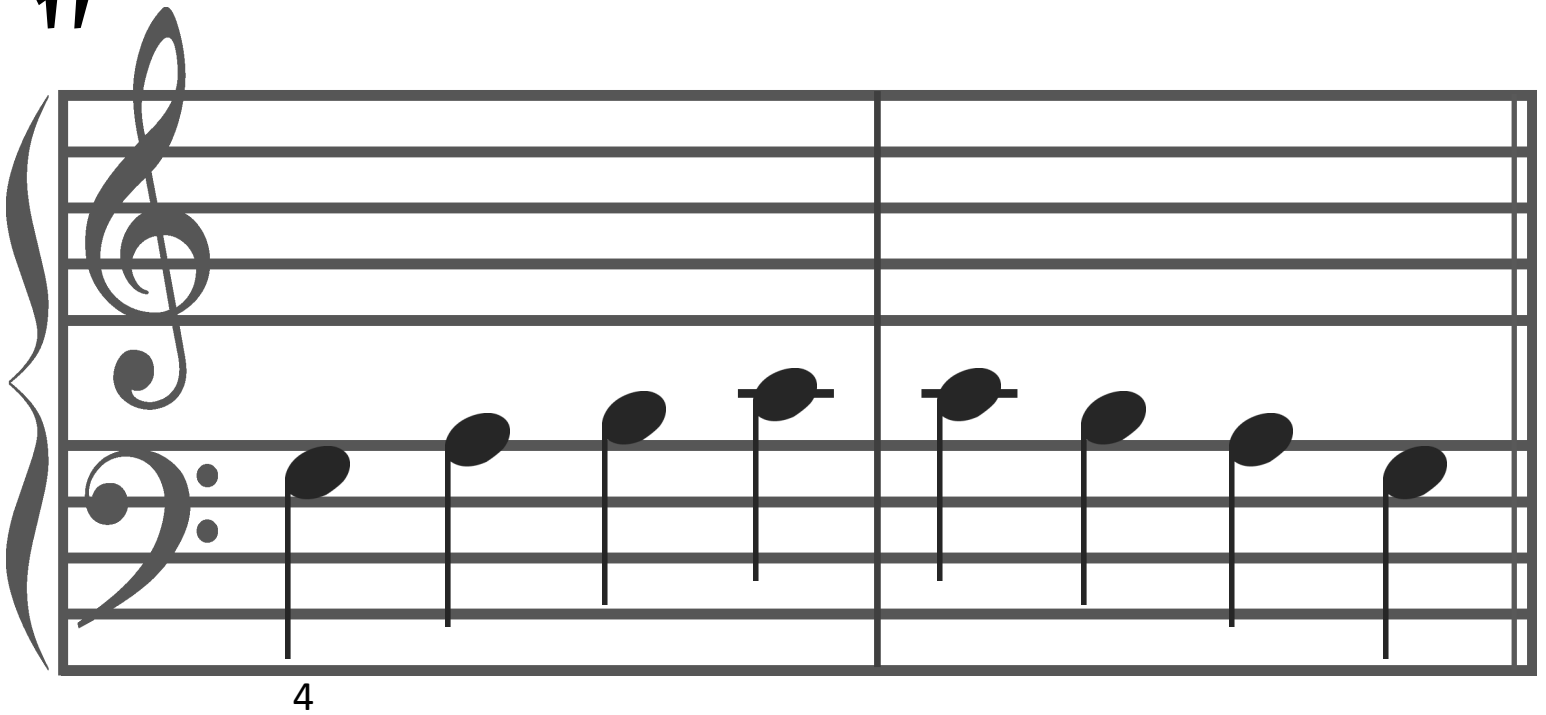


Musical notation for exercise 16, consisting of two staves (treble and bass clef). The exercise is divided into two measures. In the first measure, the treble clef has a sequence of three notes (F4, G4, A4) with a '3' above. In the second measure, the treble clef has a sequence of four notes (B4, C5, B4, A4) with a '3' above. The bass clef has a sequence of four notes (F3, G3, A3, B3) with a '1' below. The notes are quarter notes.

[www.Piano-Together.com](http://www.Piano-Together.com)

Mini Sight Reader : Steps

17



Musical notation for exercise 17, featuring a grand staff with treble and bass clefs. The bass clef contains a sequence of eight quarter notes: G2, A2, B2, C3, D3, E3, F3, and G3. The treble clef is empty. A '4' is written below the first note in the bass clef.

[www.Piano-Together.com](http://www.Piano-Together.com)

Mini Sight Reader : Steps

18

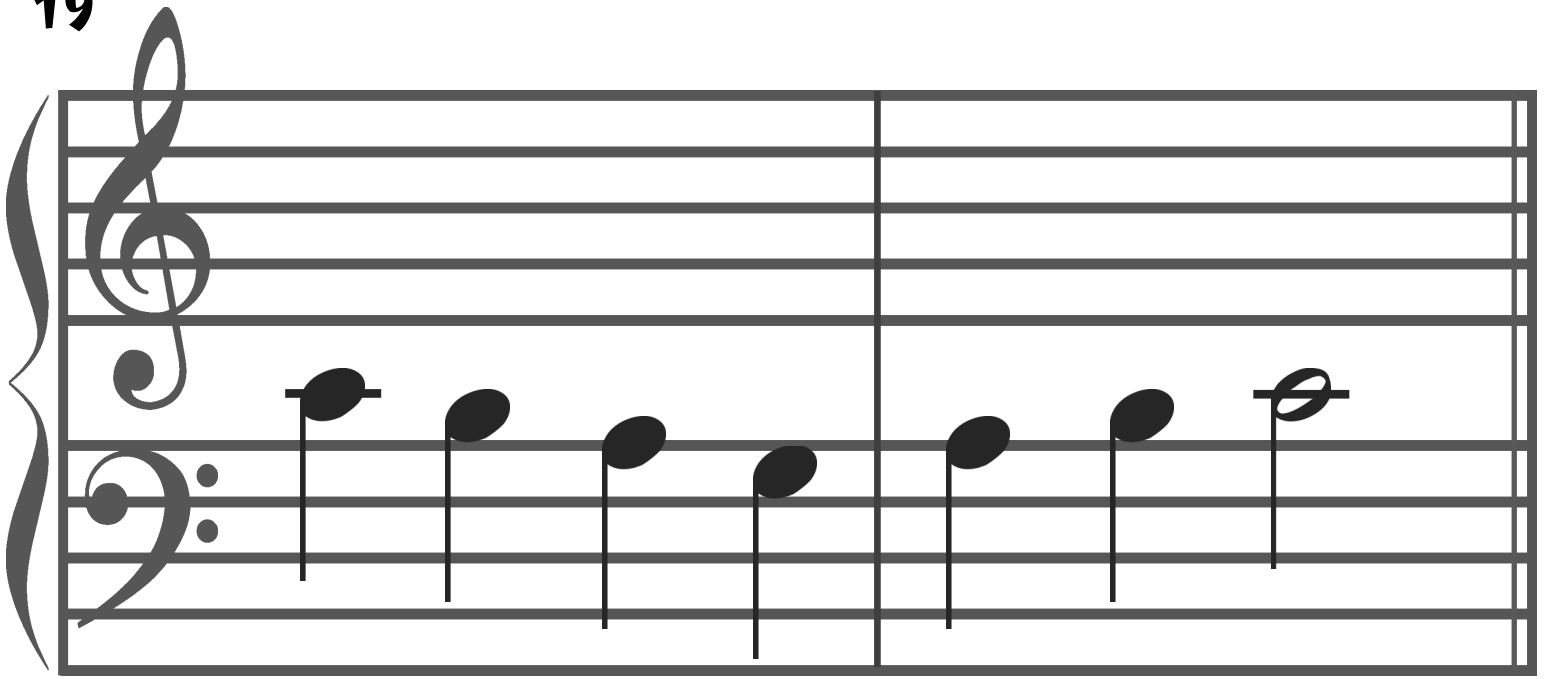


Musical notation for exercise 18, featuring a grand staff with treble and bass clefs. The bass clef contains a sequence of eight quarter notes: G2, A2, B2, C3, D3, E3, F3, and G3. The treble clef is empty. A '4' is written below the first note in the bass clef.

[www.Piano-Together.com](http://www.Piano-Together.com)

Mini Sight Reader : Steps

19



1

[www.Piano-Together.com](http://www.Piano-Together.com)

Mini Sight Reader : Steps

20



1

[www.Piano-Together.com](http://www.Piano-Together.com)

Mini Sight Reader : Steps

21

3  
1



Musical notation for exercise 21. The exercise is written on a grand staff with a treble clef on the upper staff and a bass clef on the lower staff. The first measure contains two chords: a triad of G4, B4, and D5 in the treble clef, and a dyad of G3 and B3 in the bass clef. The second measure contains a dyad of G4 and B4 in the treble clef, and a dyad of G3 and B3 in the bass clef. The third measure contains a dyad of G4 and B4 in the treble clef, and a dyad of G3 and B3 in the bass clef. The fourth measure contains a dyad of G4 and B4 in the treble clef, and a dyad of G3 and B3 in the bass clef. The fifth measure contains a dyad of G4 and B4 in the treble clef, and a dyad of G3 and B3 in the bass clef. The sixth measure contains a dyad of G4 and B4 in the treble clef, and a dyad of G3 and B3 in the bass clef. The seventh measure contains a dyad of G4 and B4 in the treble clef, and a dyad of G3 and B3 in the bass clef. The eighth measure contains a dyad of G4 and B4 in the treble clef, and a dyad of G3 and B3 in the bass clef. The exercise is divided into two measures by a bar line.

4

[www.Piano-Together.com](http://www.Piano-Together.com)

Mini Sight Reader : Steps

22

2



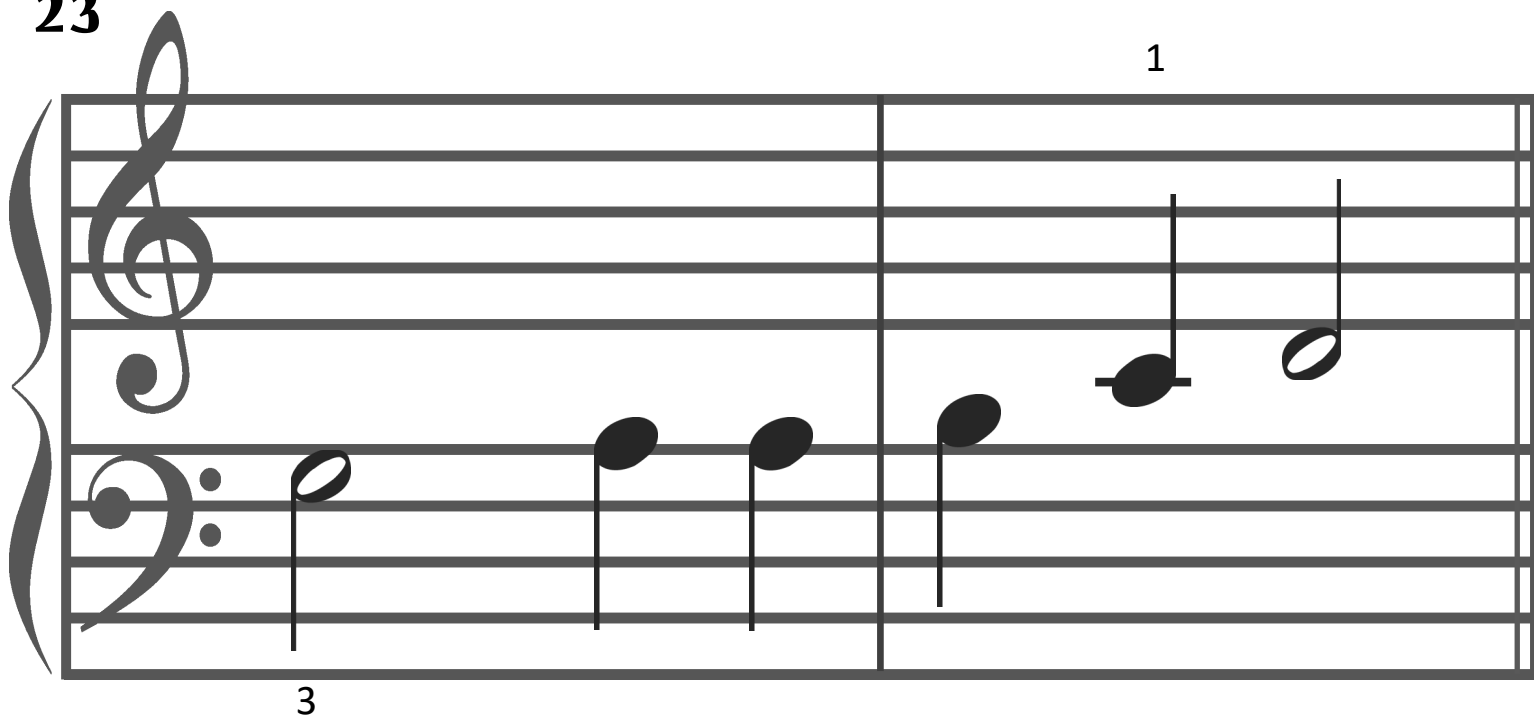
Musical notation for exercise 22. The exercise is written on a grand staff with a treble clef on the upper staff and a bass clef on the lower staff. The first measure contains a dyad of G4 and B4 in the treble clef, and a dyad of G3 and B3 in the bass clef. The second measure contains a dyad of G4 and B4 in the treble clef, and a dyad of G3 and B3 in the bass clef. The third measure contains a dyad of G4 and B4 in the treble clef, and a dyad of G3 and B3 in the bass clef. The fourth measure contains a dyad of G4 and B4 in the treble clef, and a dyad of G3 and B3 in the bass clef. The fifth measure contains a dyad of G4 and B4 in the treble clef, and a dyad of G3 and B3 in the bass clef. The sixth measure contains a dyad of G4 and B4 in the treble clef, and a dyad of G3 and B3 in the bass clef. The seventh measure contains a dyad of G4 and B4 in the treble clef, and a dyad of G3 and B3 in the bass clef. The eighth measure contains a dyad of G4 and B4 in the treble clef, and a dyad of G3 and B3 in the bass clef. The exercise is divided into two measures by a bar line.

3

[www.Piano-Together.com](http://www.Piano-Together.com)

Mini Sight Reader : Steps

23



Musical notation for exercise 23, consisting of two staves (treble and bass clefs) and a grand staff bracket. The first staff (treble clef) contains two measures. The first measure is empty. The second measure contains two quarter notes: G4 and A4. The second staff (bass clef) contains two measures. The first measure contains a quarter note G2, with the number '3' written below it. The second measure contains a quarter note G2, with the number '1' written above it. The third measure contains a quarter note A2, with the number '1' written above it. The fourth measure contains a quarter note B2, with the number '1' written above it. The fifth measure contains a quarter note C3, with the number '1' written above it. The sixth measure contains a quarter note D3, with the number '1' written above it.

[www.Piano-Together.com](http://www.Piano-Together.com)

Mini Sight Reader : Steps

24

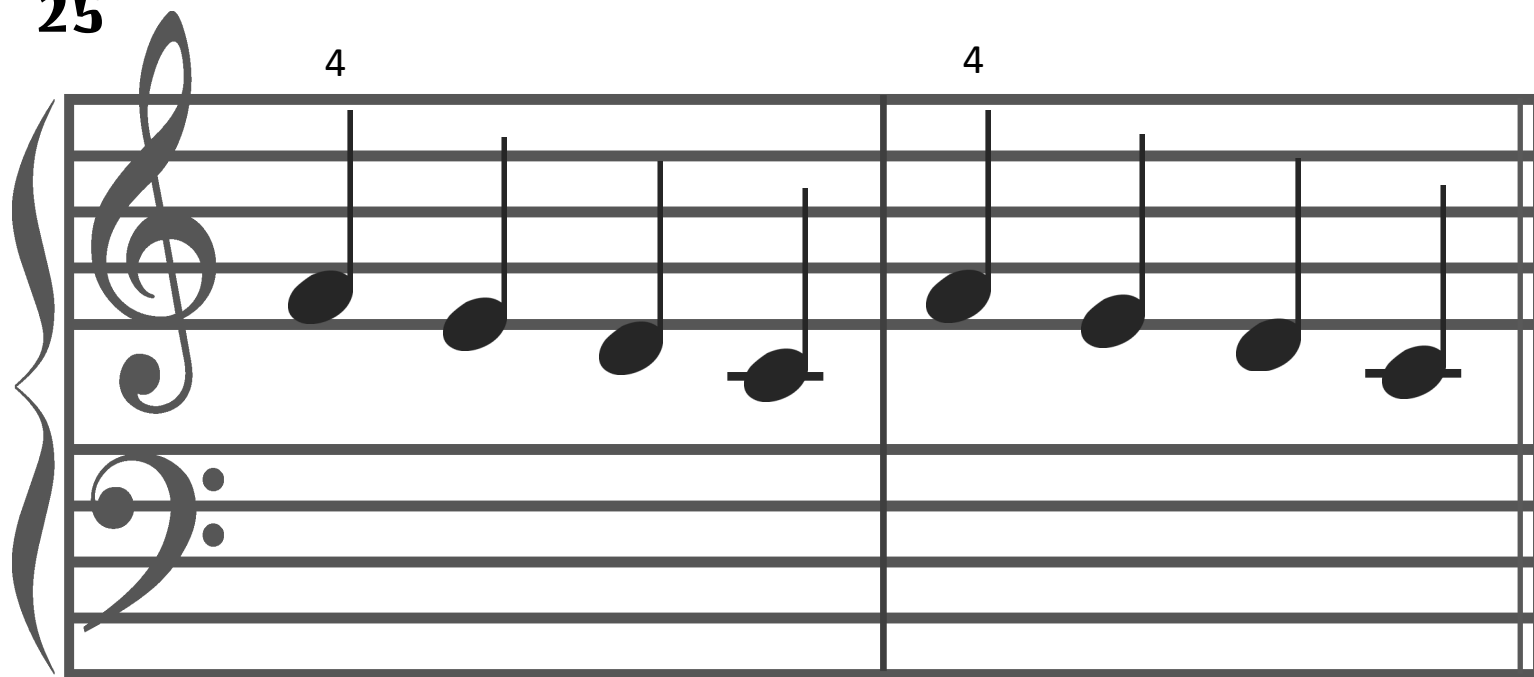


Musical notation for exercise 24, consisting of two staves (treble and bass clefs) and a grand staff bracket. The first staff (treble clef) is empty. The second staff (bass clef) contains two measures. The first measure contains a quarter note G2, with the number '3' written below it. The second measure contains a quarter note A2. The third measure contains a quarter note B2. The fourth measure contains a quarter note C3. The fifth measure contains a quarter note D3. The sixth measure contains a quarter note E3.

[www.Piano-Together.com](http://www.Piano-Together.com)

Mini Sight Reader : Steps

25



Musical notation for exercise 25, featuring a treble clef and a grand staff. The exercise consists of two measures. The first measure contains four quarter notes: G4, A4, B4, and C5. The second measure contains four quarter notes: C5, B4, A4, and G4. A finger number '4' is written above the first note of each measure. The bass clef staff is empty.

[www.Piano-Together.com](http://www.Piano-Together.com)

Mini Sight Reader : Steps

26

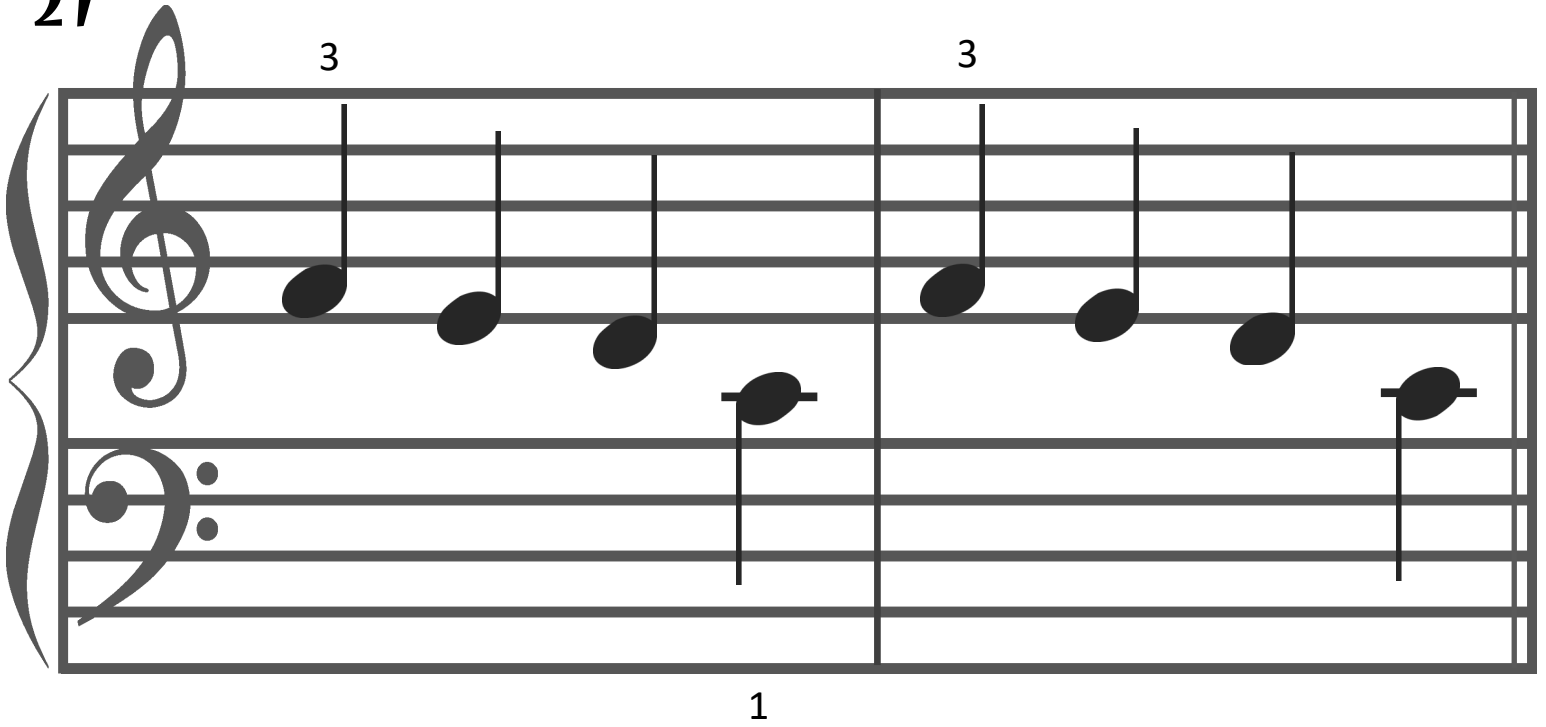


Musical notation for exercise 26, featuring a treble clef and a grand staff. The exercise consists of two measures. The first measure contains four quarter notes: G4, A4, B4, and C5. The second measure contains two half notes: C5 and B4. A finger number '1' is written above the first note of the first measure. The bass clef staff is empty.

[www.Piano-Together.com](http://www.Piano-Together.com)

Mini Sight Reader : Steps

27

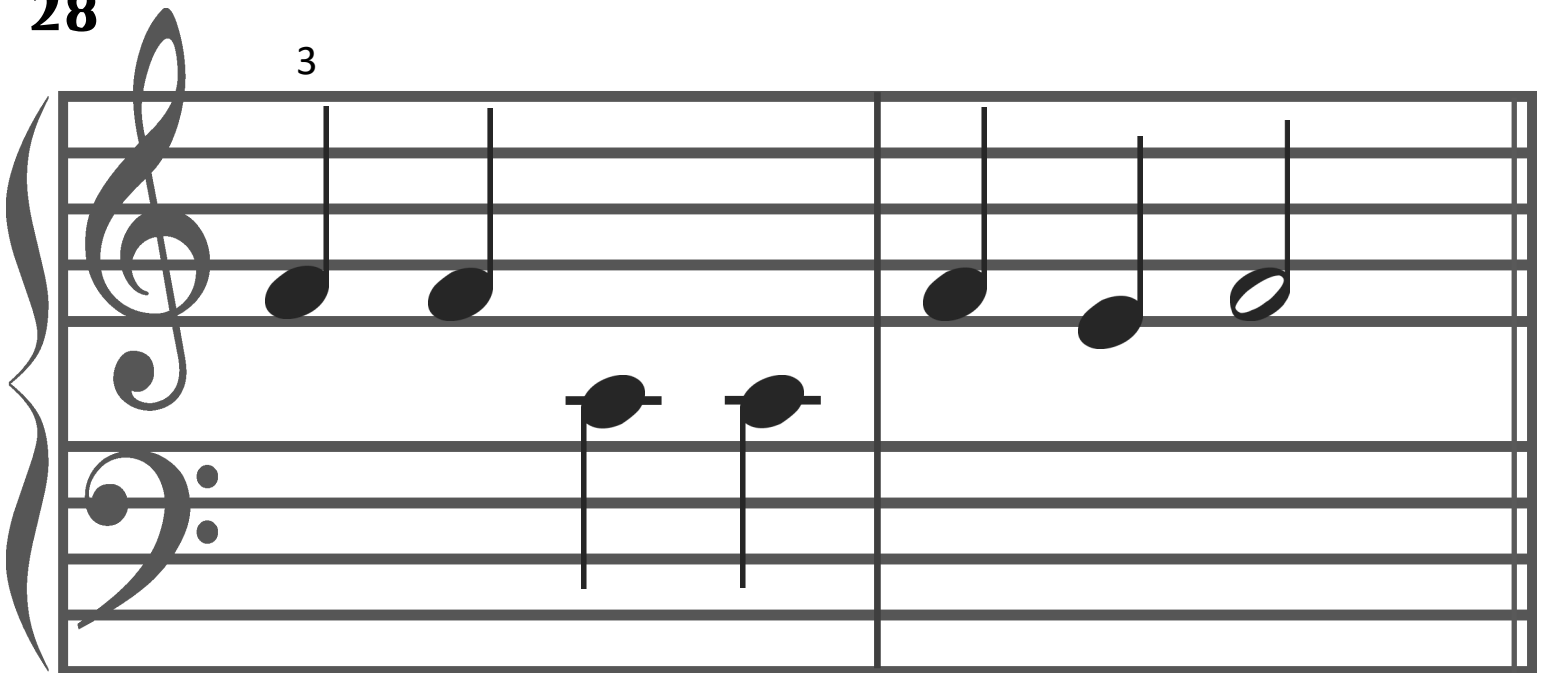


Musical notation for exercise 27, consisting of two measures. The first measure features a treble clef with a treble staff containing a triplet of three eighth notes (G4, A4, B4) and a bass staff with a single eighth note (F3). The second measure features a treble clef with a treble staff containing a triplet of three eighth notes (B4, C5, D5) and a bass staff with a single eighth note (G3). The number '3' is placed above the first note of each triplet. The number '1' is placed below the first note of the bass staff in the second measure.

[www.Piano-Together.com](http://www.Piano-Together.com)

Mini Sight Reader : Steps

28

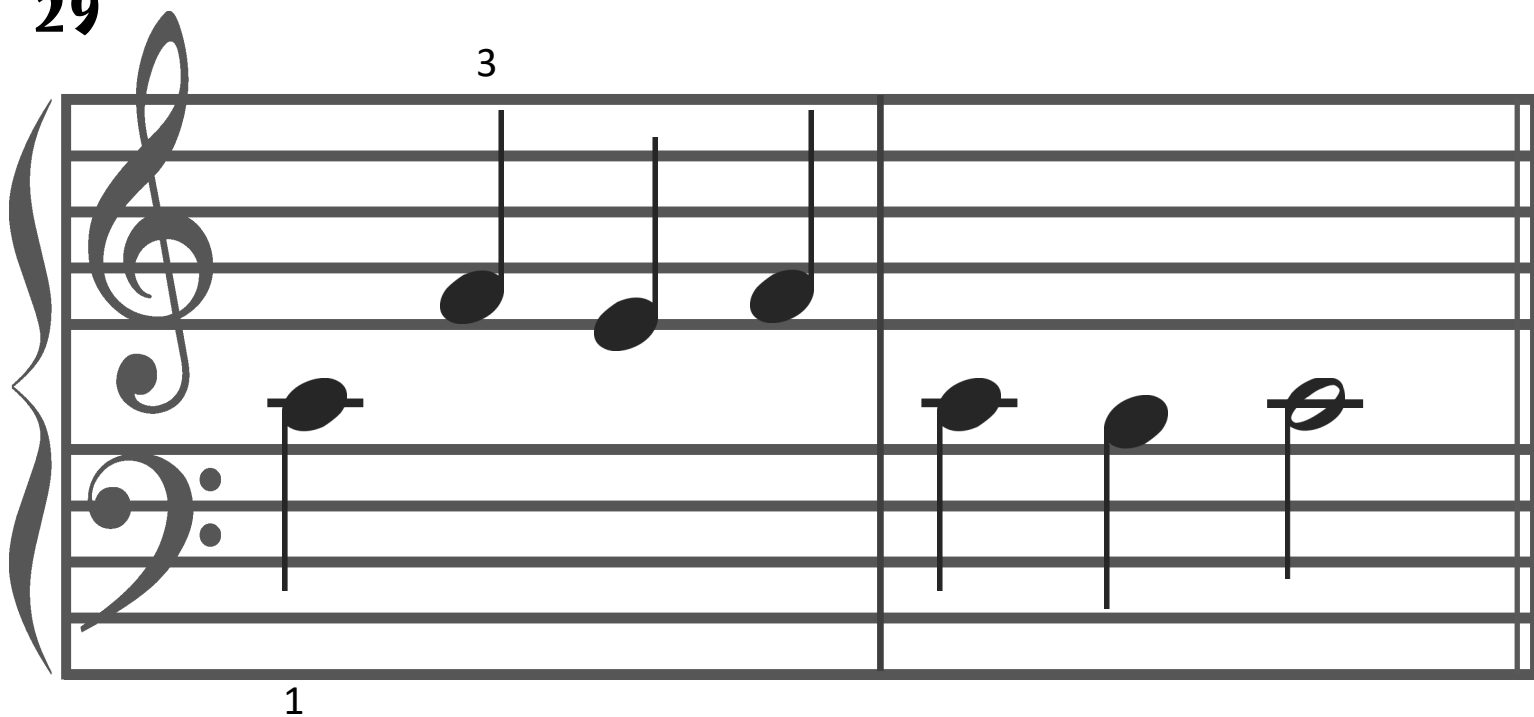


Musical notation for exercise 28, consisting of two measures. The first measure features a treble clef with a treble staff containing two eighth notes (G4, A4) and a bass staff with two eighth notes (F3, G3). The second measure features a treble clef with a treble staff containing two eighth notes (B4, C5) and a bass staff with two eighth notes (A3, B3). The number '3' is placed above the first note of the treble staff in the first measure.

[www.Piano-Together.com](http://www.Piano-Together.com)

Mini Sight Reader : Steps

29

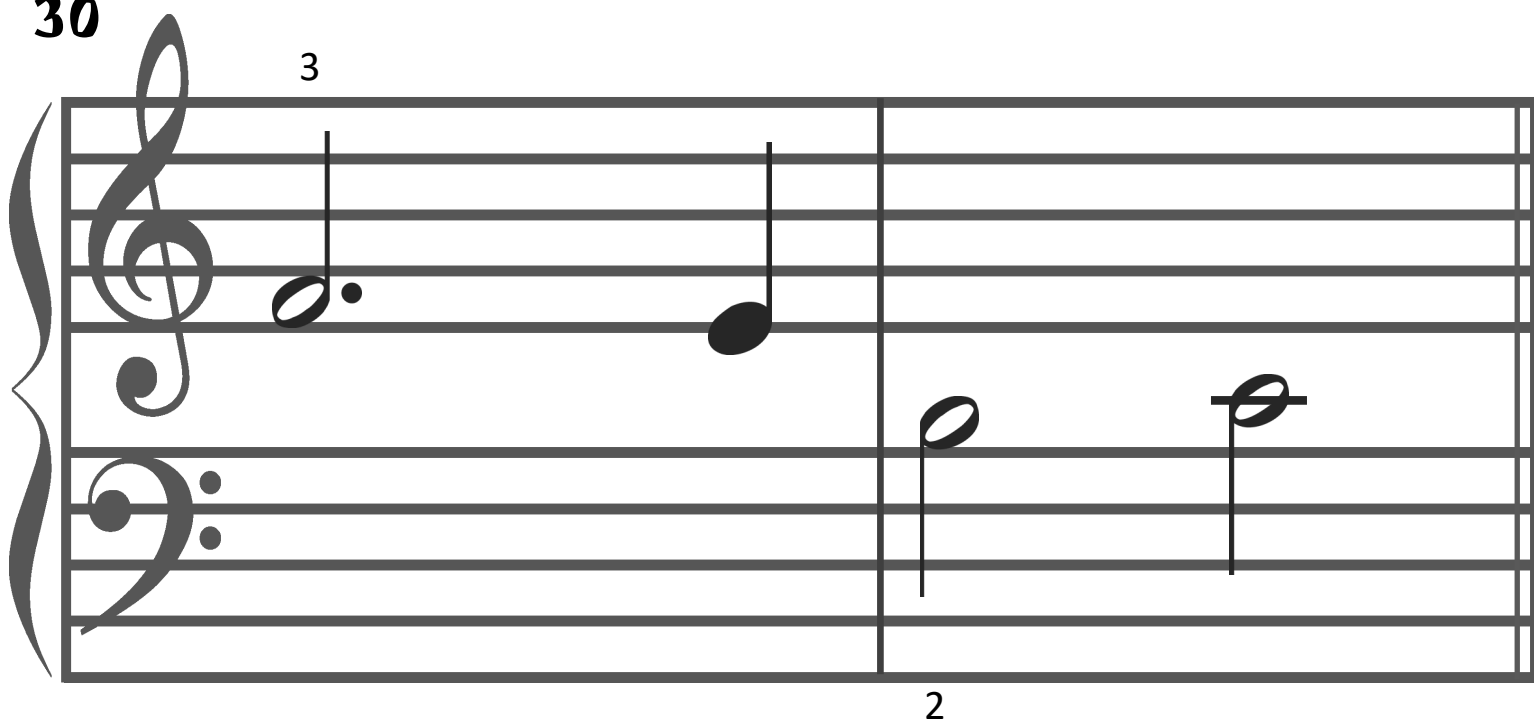


Musical notation for exercise 29, consisting of two measures. The first measure contains a bass clef with a quarter note on the first line (labeled '1') and a treble clef with a quarter note on the second line (labeled '3'). The second measure contains a bass clef with a quarter note on the second line and a treble clef with a quarter note on the second line.

[www.Piano-Together.com](http://www.Piano-Together.com)

Mini Sight Reader : Steps

30



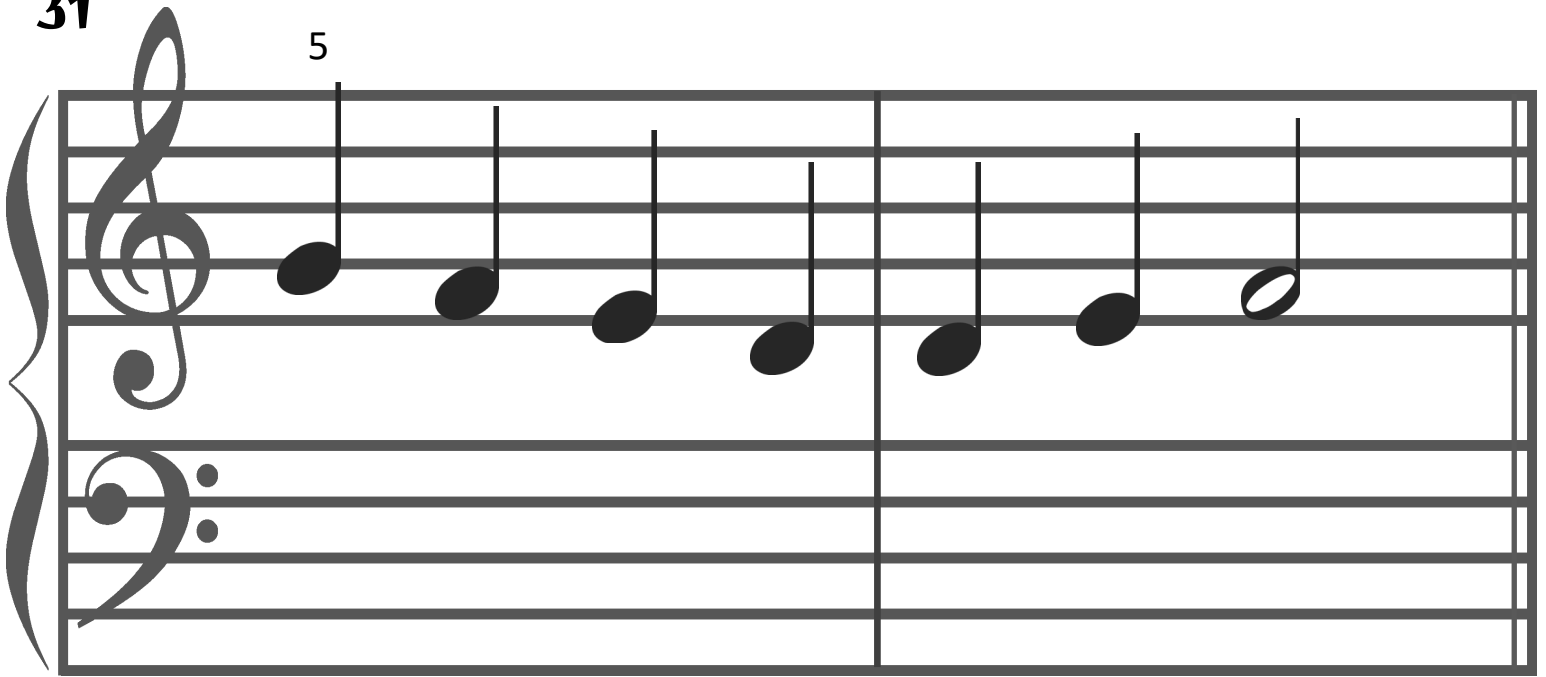
Musical notation for exercise 30, consisting of two measures. The first measure contains a bass clef with a quarter note on the second line and a treble clef with a quarter note on the second line (labeled '3'). The second measure contains a bass clef with a quarter note on the second line (labeled '2') and a treble clef with a quarter note on the second line.

[www.Piano-Together.com](http://www.Piano-Together.com)

Mini Sight Reader : Steps



31



Musical notation for exercise 31. It consists of a grand staff with a treble clef and a bass clef. The treble clef staff contains a sequence of eight quarter notes: G4, A4, B4, C5, B4, A4, G4, and F4. A finger number '5' is written above the first note (G4). The bass clef staff is empty. The piece concludes with a double bar line.

[www.Piano-Together.com](http://www.Piano-Together.com)

Mini Sight Reader : Steps

32

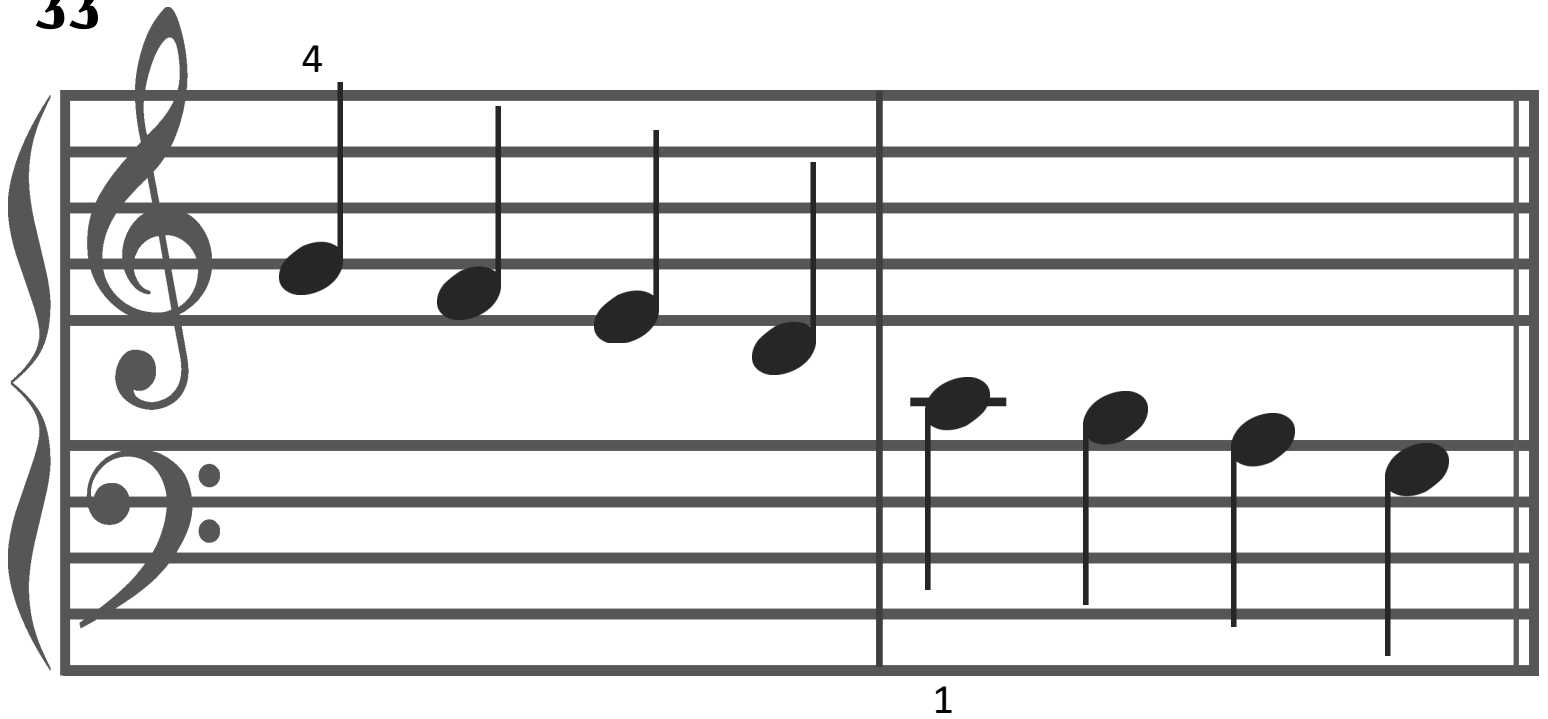


Musical notation for exercise 32. It consists of a grand staff with a treble clef and a bass clef. The treble clef staff contains a sequence of six quarter notes: G4, A4, B4, C5, B4, and A4. A finger number '4' is written above the first note (G4). The bass clef staff is empty. The piece concludes with a double bar line.

[www.Piano-Together.com](http://www.Piano-Together.com)

Mini Sight Reader : Steps

**33**

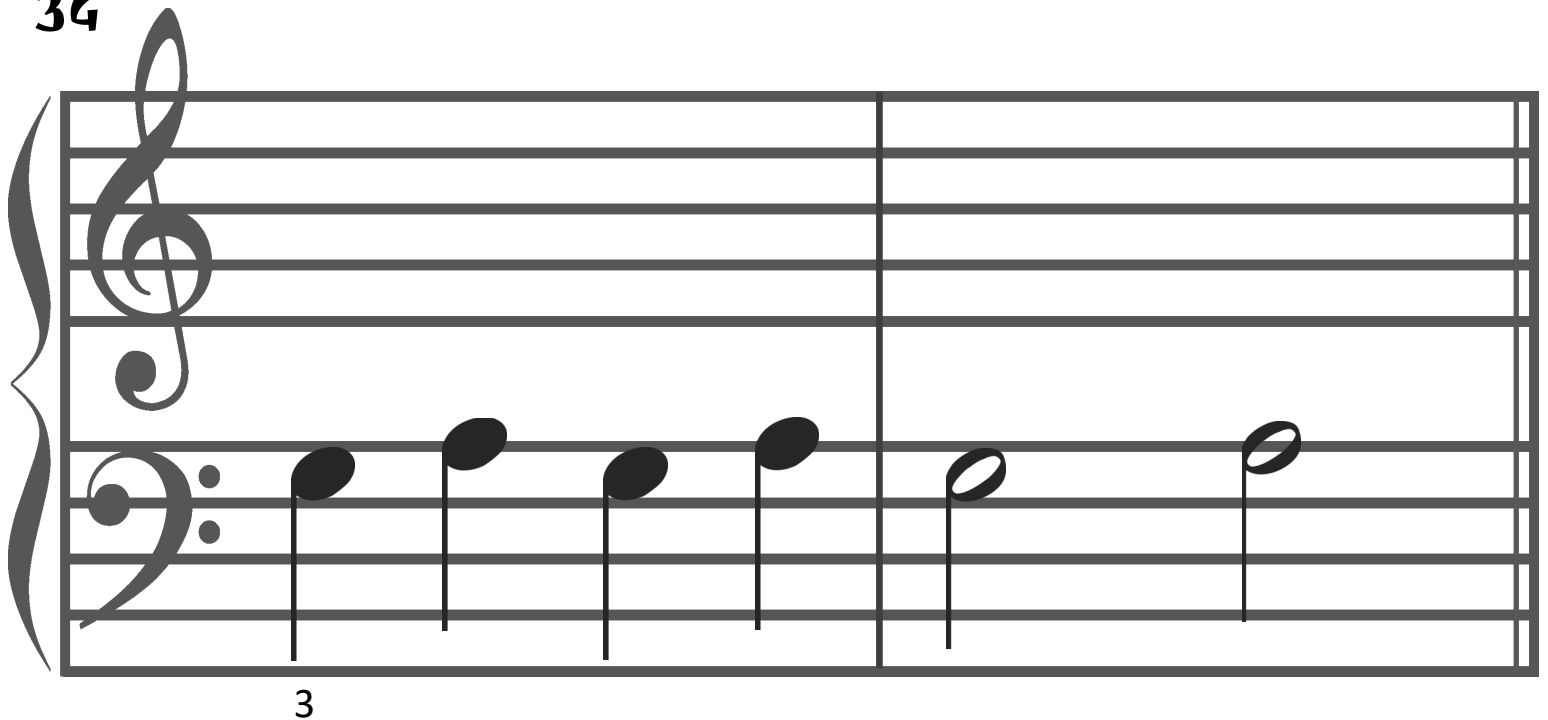


Musical notation for exercise 33, consisting of two staves. The first staff (treble clef) contains four quarter notes: G4, A4, B4, and C5. The second staff (bass clef) contains four quarter notes: G3, F3, E3, and D3. A finger number '4' is written above the first note in the first staff, and a finger number '1' is written below the first note in the second staff.

[www.Piano-Together.com](http://www.Piano-Together.com)

**Mini Sight Reader : Steps**

**34**



Musical notation for exercise 34, consisting of two staves. The first staff (treble clef) is empty. The second staff (bass clef) contains six quarter notes: G3, A3, B3, C4, D4, and E4. A finger number '3' is written below the first note in the second staff.

[www.Piano-Together.com](http://www.Piano-Together.com)

**Mini Sight Reader : Steps**

35

Musical notation for exercise 35. The exercise is written on a grand staff with a treble clef on the upper staff and a bass clef on the lower staff. The first measure contains a quarter note on G4 in the treble clef and a quarter note on C3 in the bass clef. The second measure contains a quarter note on B4 in the treble clef and a quarter note on D3 in the bass clef. The third measure contains a quarter note on A4 in the treble clef and a quarter note on E3 in the bass clef. The fourth measure contains a quarter note on G4 in the treble clef and a quarter note on F3 in the bass clef. A triplet of three eighth notes (G4, F4, E4) is written in the bass clef, starting in the second measure and ending in the fourth measure. The number '3' is placed above the first note of the triplet in the second measure and below the first note of the triplet in the fourth measure.

[www.Piano-Together.com](http://www.Piano-Together.com)

Mini Sight Reader : Steps

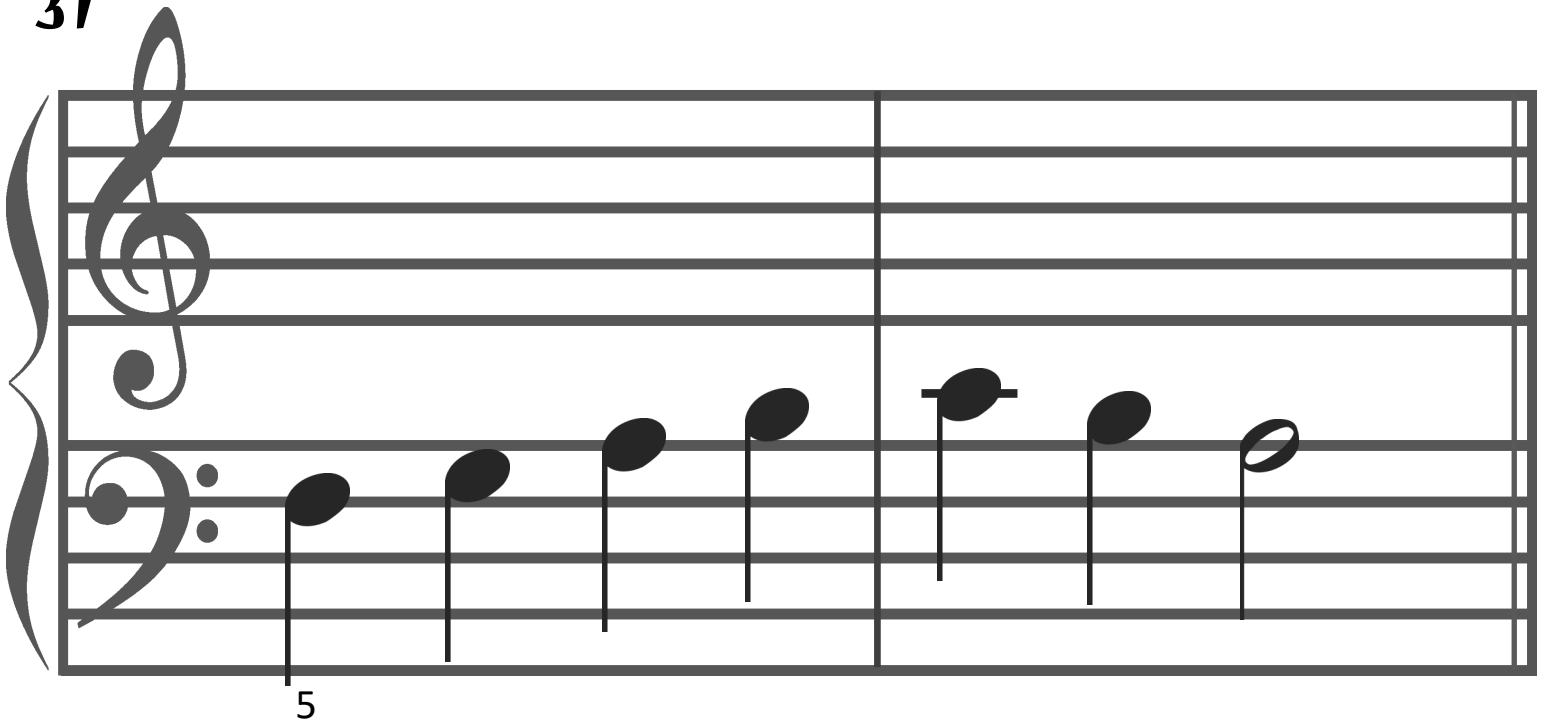
36

Musical notation for exercise 36. The exercise is written on a grand staff with a treble clef on the upper staff and a bass clef on the lower staff. The first measure contains a quarter note on G4 in the treble clef and a quarter note on C3 in the bass clef. The second measure contains a quarter note on A4 in the treble clef and a quarter note on D3 in the bass clef. The third measure contains a quarter note on B4 in the treble clef and a quarter note on E3 in the bass clef. The fourth measure contains a quarter note on C5 in the treble clef and a quarter note on F3 in the bass clef. The fifth measure contains a quarter note on B4 in the treble clef and a quarter note on G3 in the bass clef. The sixth measure contains a quarter note on A4 in the treble clef and a quarter note on F3 in the bass clef. The seventh measure contains a quarter note on G4 in the treble clef and a quarter note on E3 in the bass clef. The eighth measure contains a quarter note on F4 in the treble clef and a quarter note on D3 in the bass clef. The number '5' is placed above the first note of the exercise in the first measure.

[www.Piano-Together.com](http://www.Piano-Together.com)

Mini Sight Reader : Steps

37

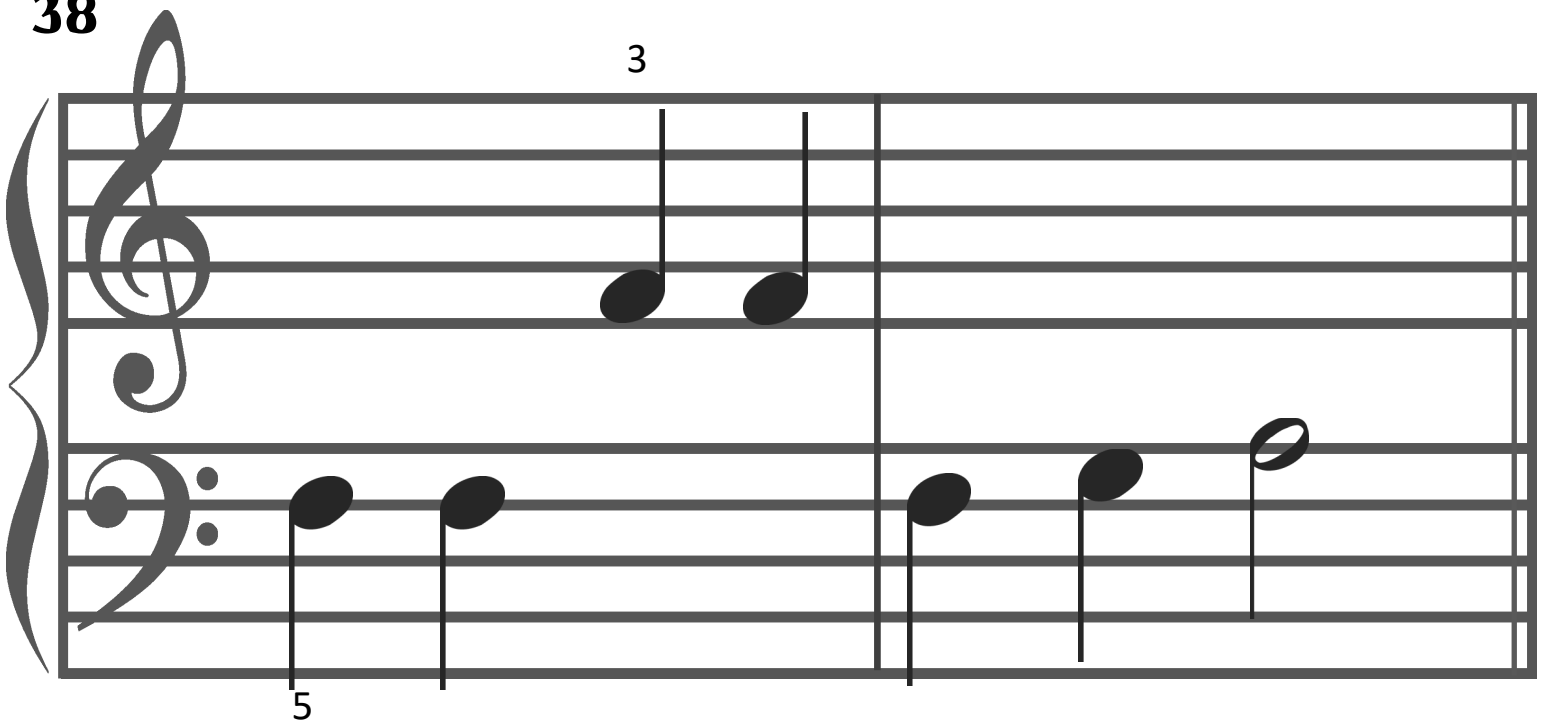


Musical notation for exercise 37, consisting of two staves (treble and bass clefs) with a grand staff bracket on the left. The bass staff contains a sequence of seven quarter notes: G4, A4, B4, C5, B4, A4, and G4. The first note (G4) is marked with the number 5. The treble staff is empty.

[www.Piano-Together.com](http://www.Piano-Together.com)

Mini Sight Reader : Steps

38

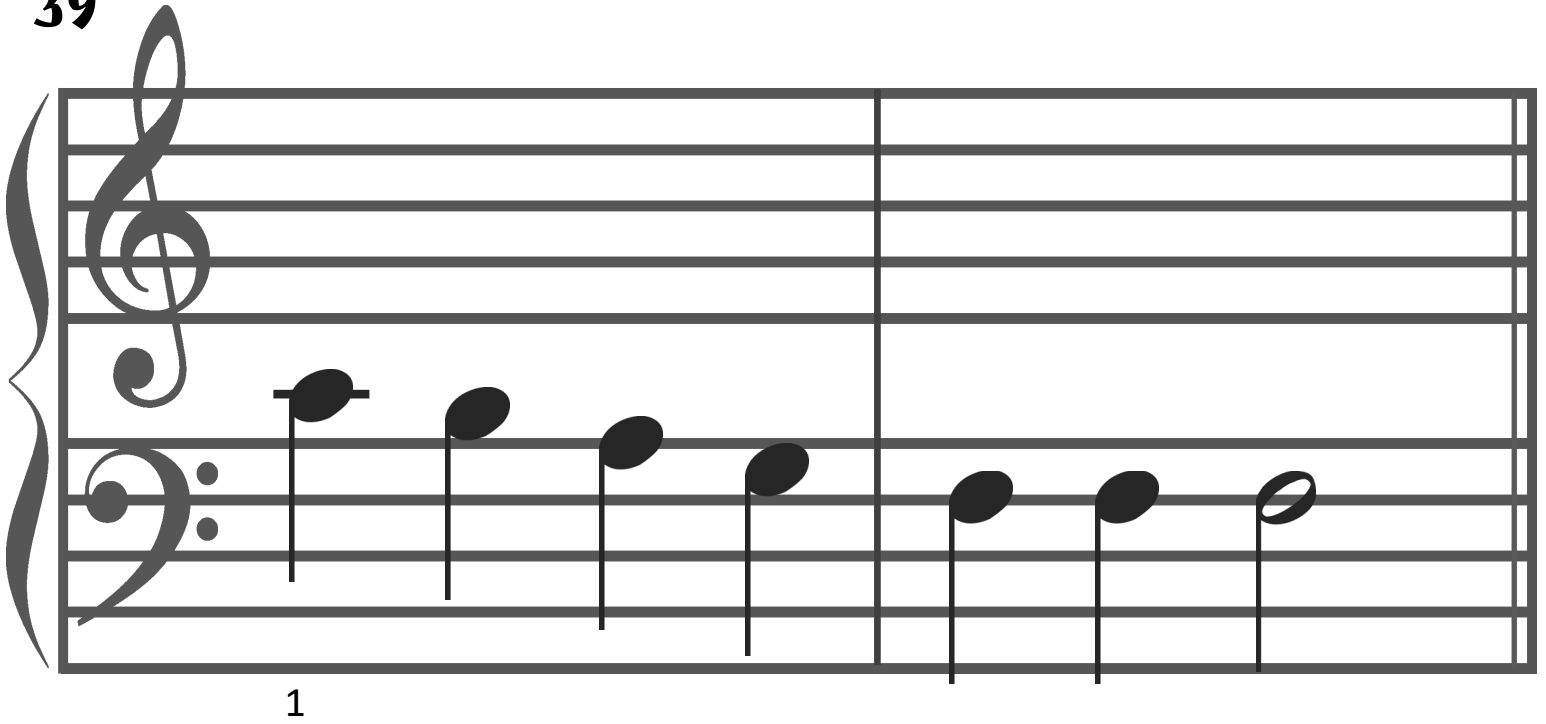


Musical notation for exercise 38, consisting of two staves (treble and bass clefs) with a grand staff bracket on the left. The bass staff contains a sequence of seven quarter notes: G4, A4, B4, C5, B4, A4, and G4. The first note (G4) is marked with the number 5. The treble staff contains a triplet of two eighth notes: C5 and B4, marked with the number 3 above them.

[www.Piano-Together.com](http://www.Piano-Together.com)

Mini Sight Reader : Steps

39

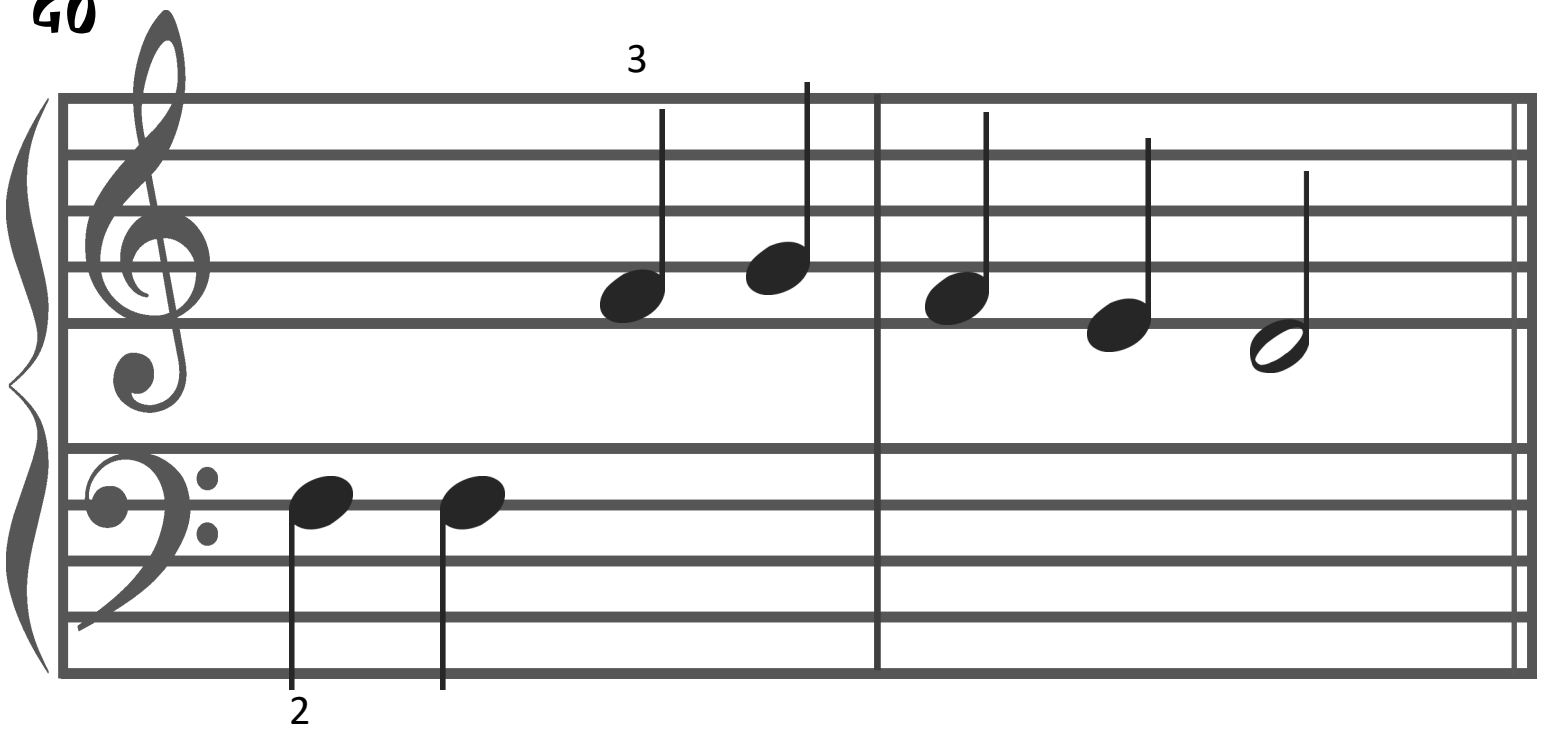


Musical notation for exercise 39, featuring a grand staff with treble and bass clefs. The bass clef contains a sequence of seven quarter notes: G2, F2, E2, D2, C2, B1, and A1. The treble clef is empty. A finger number '1' is positioned below the first note (G2).

[www.Piano-Together.com](http://www.Piano-Together.com)

Mini Sight Reader : Steps

40



Musical notation for exercise 40, featuring a grand staff with treble and bass clefs. The bass clef contains two quarter notes: G2 and F2, with a finger number '2' below the first note. The treble clef contains five quarter notes: G3, A3, G3, F3, and E3, with a finger number '3' above the first note.

[www.Piano-Together.com](http://www.Piano-Together.com)

Mini Sight Reader : Steps